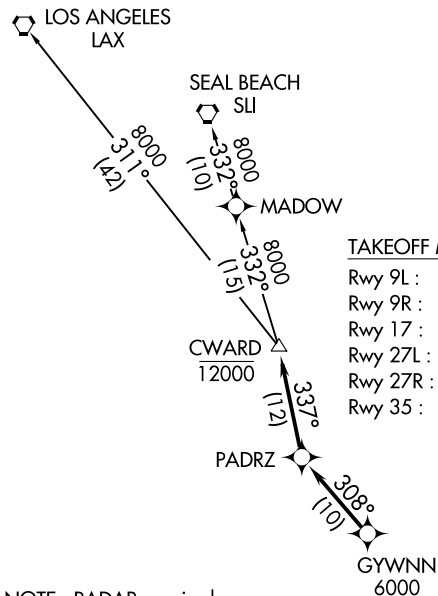


**TOP ALTITUDE:
AS ASSIGNED BY ATC**

ATIS 125.45
GILLESPIE TOWER* 120.7 257.8
SOCAL DEP CON 119.6 363.1

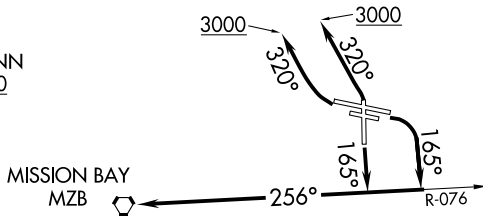


TAKEOFF MINIMUMS

- Rwy 9L : 900-2¾ with minimum climb of 400' per NM to 3600.
- Rwy 9R : 900-2¾ with minimum climb of 405' per NM to 3600.
- Rwy 17 : Standard with minimum climb of 480' per NM to 2200.
- Rwy 27L : Standard with minimum climb of 320' per NM to 1200.
- Rwy 27R : Standard with minimum climb of 420' per NM to 1200.
- Rwy 35 : Standard with minimum climb of 400' per NM to 1600.

- NOTE: RADAR required.
- NOTE: RNAV 1.
- NOTE: GPS or DME/DME/IRU required.
- NOTE: Turbojet and turboprop only.
- NOTE: Tower En Route control only.

NOTE: Chart not to scale.



DEPARTURE ROUTE DESCRIPTION

TAKEOFF RUNWAYS 9L/R: Climbing right turn heading 165° and on MZB R-076 to MZB VORTAC to 3000, expect vectors to cross GYWNN at or above 6000, then on track 308° to PADRZ, then on track 337° to cross CWARD at or below 12000, thence. . . .

TAKEOFF RUNWAY 17: Climb heading 165° and MZB R-076 to MZB VORTAC to 2800, expect vectors to cross GYWNN at or above 6000, then on track 308° to PADRZ, then on track 337° to cross CWARD at or below 12000, thence. . . .

TAKEOFF RUNWAYS 27L/R: Climbing right turn heading 320° to 3000, expect vectors to cross GYWNN at or above 6000, then on track 308° to PADRZ, then on track 337° to cross CWARD at or below 12000, thence. . . .

TAKEOFF RUNWAY 35: Climbing left turn heading 320° to 3000, expect vectors to cross GYWNN at or above 6000, then on track 308° to PADRZ, then on track 337° to cross CWARD at or below 12000, thence. . . .

. . . on transition. Maintain ATC assigned altitude. Expect filed altitude 10 minutes after departure.

LOS ANGELES TRANSITION (CWARD2.LAX)

SEAL BEACH TRANSITION (CWARD2.SLI)

SW-3, 07 SEP 2023 to 05 OCT 2023

SW-3, 07 SEP 2023 to 05 OCT 2023