

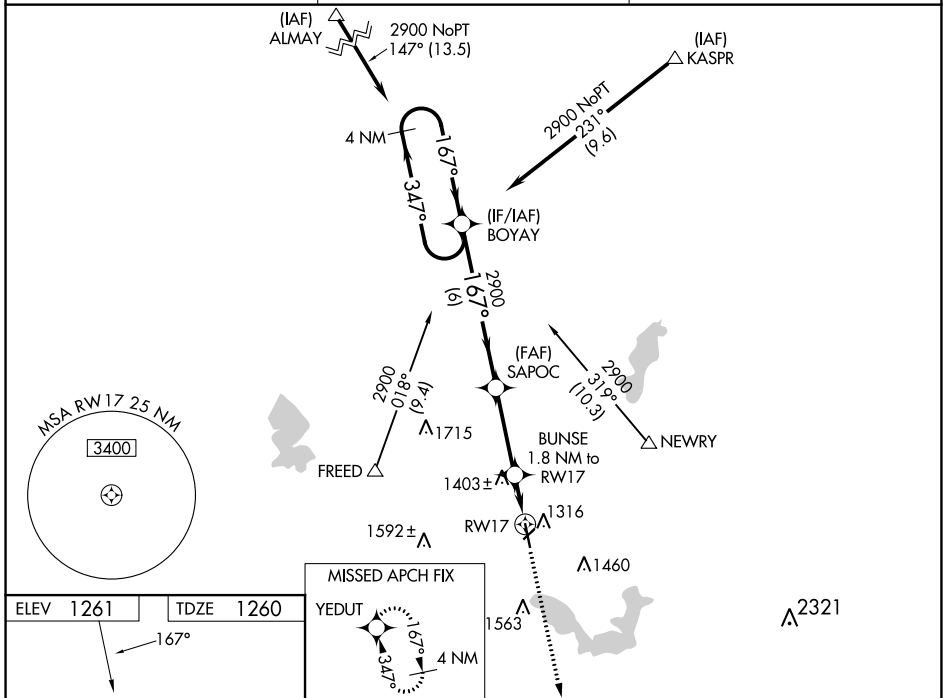
| | | | |
|--|------------------------|-----------------------------|---|
| WAAS CH 49204 W17A | APP CRS 167° | Rwy Idg TDZE Apt Elev | 5000 1260 1261 |
|--|------------------------|-----------------------------|---|

RNAV (GPS) RWY 17

ALBERT LEA MUNI (AEL)

| | | |
|---|-------|---|
| RNP APCH. | ODALS | MISSED APPROACH: Climb to 2900 direct YEDUT and hold. |
| <p>▼ Baro-VNAV NA when using Austin altimeter setting. For uncompensated Baro-VNAV systems, LNAV/VNAV NA below -28°C or above 36°C. Rwy 17 helicopter visibility reduction below 3/4 SM NA. VDP NA with Austin altimeter setting. When local altimeter setting not received, use Austin altimeter setting and increase all DA 48 feet and all MDA 60 feet; increase LPV and LNAV/VNAV visibility 1/4 mile all Cats, and LNAV Cat C/D visibility 1/2 mile.</p> | | |

| | | |
|----------------------------|--|---------------------------------|
| AWOS-3PT 119.575 | ROCHESTER APP CON* 119.8 251.125 | UNICOM 123.0 (CTAF) 0 |
|----------------------------|--|---------------------------------|



| | | | |
|--|--------------------|------------------------|----------------------------|
| ELEV 1261 | | TDZE 1260 | |
| <p>VGSI and RNAV glidepath not coincident (VGSI Angle 3.00/TCH 30).</p> <p>4 NM Holding Pattern BOYAY SAPOC BUNSE 1.8 NM to RWY 17</p> <p>2900 ← 347° → 167° → 2900</p> <p>GP 3.00° TCH 50</p> <p>*1860</p> <p>*1.3 NM to RWY 17</p> <p>RWY 17</p> <p>6 NM 3.2 NM 0.5 1.3 NM</p> | | | |
| CATEGORY | A | B | C |
| LPV DA | | 1510-3/4 250 (300-3/4) | |
| LNAV/VNAV DA | | 1510-3/4 250 (300-3/4) | |
| LNAV MDA | 1700-1 440 (500-1) | | 1700-1 1/4 440 (500-1 1/4) |

NC-1, 07 SEP 2023 to 05 OCT 2023

NC-1, 07 SEP 2023 to 05 OCT 2023