

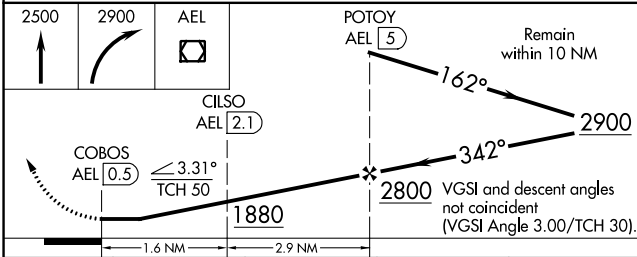
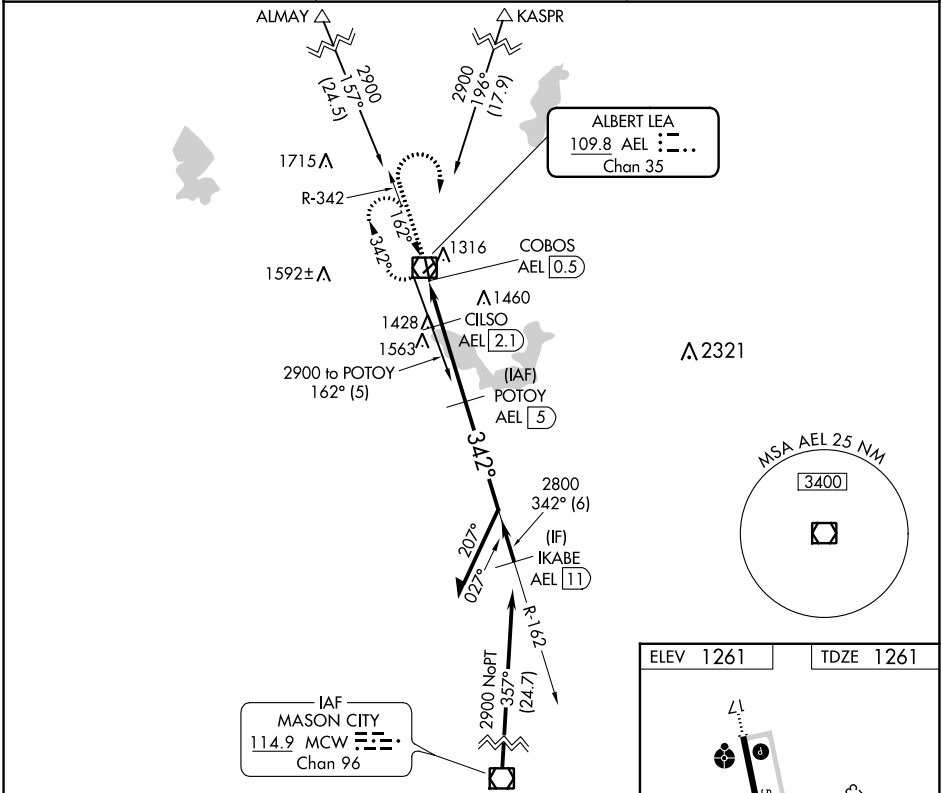
VOR/DME AEL	APP CRS	Rwy Idg	<b>5000</b>
<b>109.8</b>	<b>342°</b>	TDZE	<b>1261</b>
Chan <b>35</b>		Apt Elev	<b>1261</b>

# VOR RWY 35

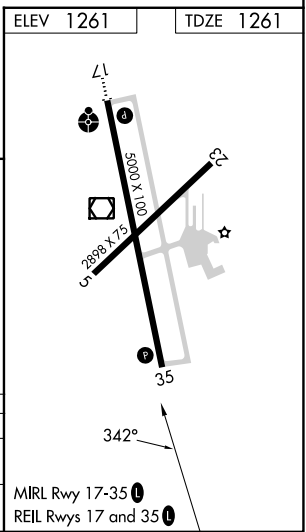
ALBERT LEA MUNI (AEL)

DME required.	MISSED APPROACH: Climb to 2500 then climbing right turn to 2900 direct AEL VOR/DME and hold.
<p>▼ Circling Rwy 5, 23 NA at night.</p> <p>▲ Rwy 35 helicopter visibility reduction below ¾ SM NA.</p>	

AWOS-3PT <b>119.575</b>	ROCHESTER APP CON * <b>119.8 251.125</b>	UNICOM <b>123.0 (CTAF) 0</b>
----------------------------	---	---------------------------------



CATEGORY	A	B	C	D
S-35	1740-1	479 (500-1)	1740-1¾	479 (500-1¾)
CIRCLING	1780-1	519 (600-1)	1920-1¾	2040-2½
			659 (700-1¾)	779 (800-2½)



NC-1, 07 SEP 2023 to 05 OCT 2023

NC-1, 07 SEP 2023 to 05 OCT 2023