

EL DORADO ONE DEPARTURE

CLNC DEL
125.6
CTAF
122.7
HOUSTON DEP CON
134.45 284.0

**TOP ALTITUDE:
ASSIGNED BY ATC**

EL DORADO
115.5 ELD
Chan 102
N33°15.37'-W92°44.64'
L-17, H-6

NOTE: RADAR required.
NOTE: For aircraft destined KMEM
or filed via Q32 or J42.

LUFKIN
112.1 LFK
Chan 58

ENJOY
N31°16.73'
W94°19.82'

MUSIQ
N30°33.17'
W94°53.53'

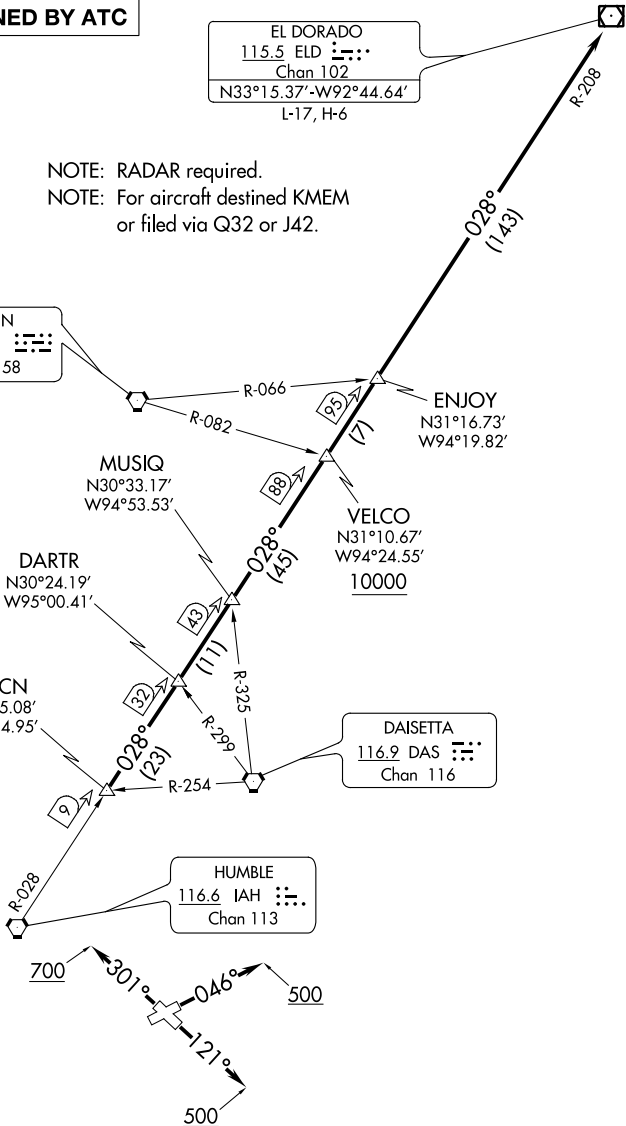
VELCO
N31°10.67'
W94°24.55'
10000

DARTR
N30°24.19'
W95°00.41'

RAECN
N30°05.08'
W95°14.95'

DAISETTA
116.9 DAS
Chan 116

HUMBLE
116.6 IAH
Chan 113



TAKEOFF MINIMUMS
Rwys 5, 12, 23, 30: Standard.

NOTE: Chart not to scale.

(NARRATIVE ON FOLLOWING PAGE)

SC-5, 07 SEP 2023 to 05 OCT 2023

SC-5, 07 SEP 2023 to 05 OCT 2023