

KARR SEVEN DEPARTURE (RNAV)

SC-5, 07 SEP 2023 to 05 OCT 2023

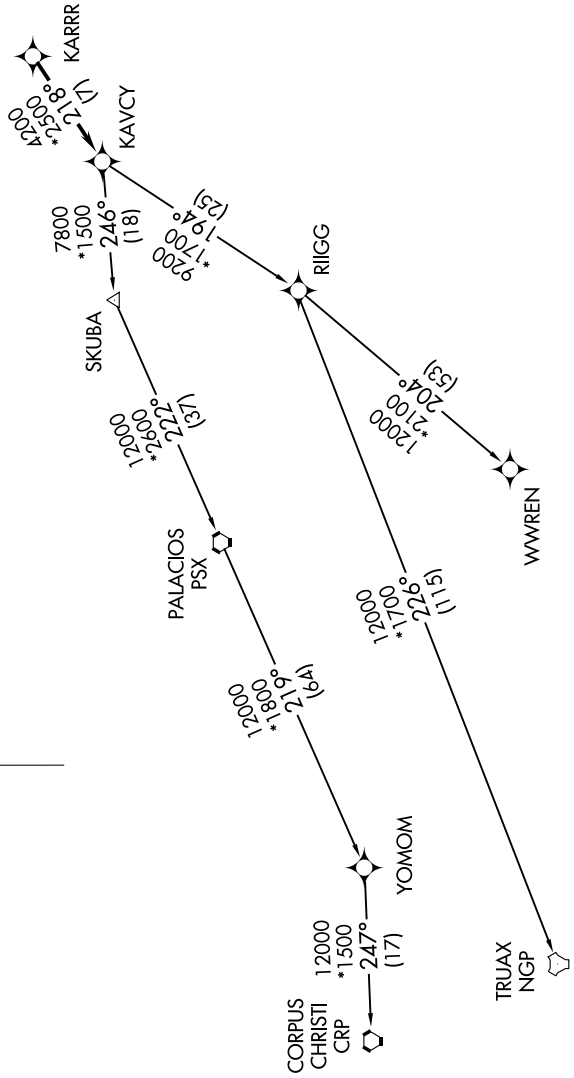
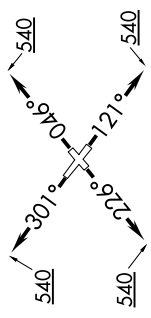
RNAV-1 DME/DME/IRU or GPS.
RADAR required.

CTAF 122.7
CLNC DEL 125.6
HOUSTON DEP CON 134.45 284.0

TAKEOFF MINIMUMS
Rwys 5, 12, 23, 30:
Standard with minimum climb of 500' per NM to 540.



**TOP ALTITUDE:
ASSIGNED BY ATC**



(NARRATIVE ON FOLLOWING PAGE)

NOTE: Chart not to scale.

SC-5, 07 SEP 2023 to 05 OCT 2023

KARR SEVEN DEPARTURE (RNAV)