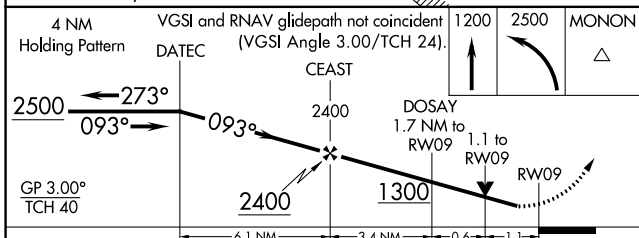
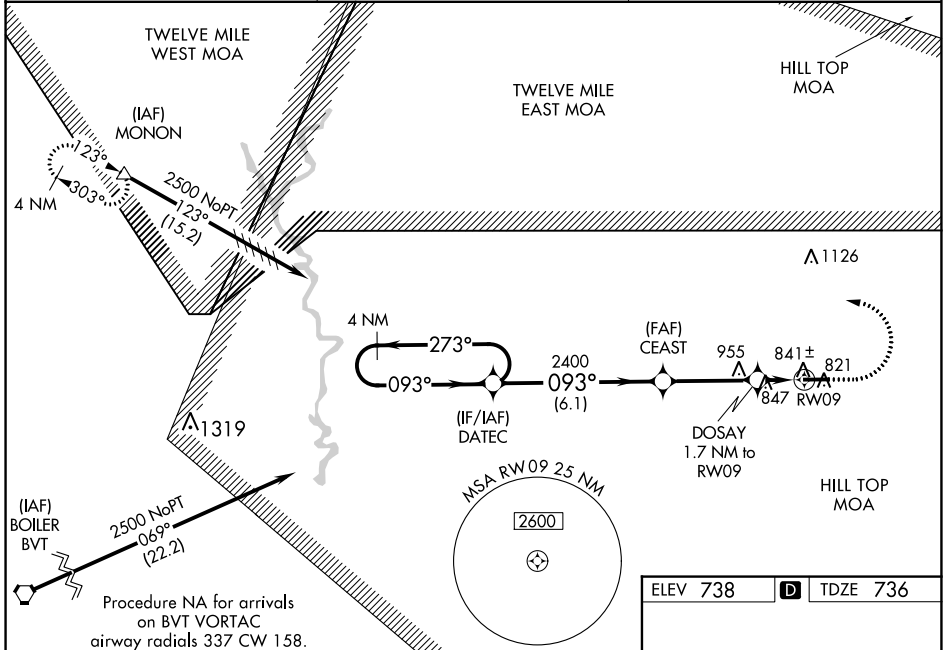


WAAS CH 45820 W09A	APP CRS 093°	Rwy Idg TDZE Apt Elev	5001 736 738
--	------------------------	-----------------------------	---

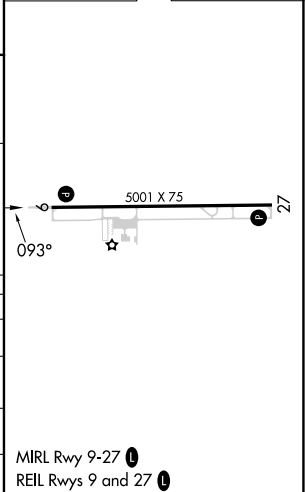
RNAV (GPS) RWY 9
LOGANSPORT/CASS COUNTY (GGP)

RNP APCH - GPS. ▼ ▲ NA	For uncompensated Baro-VNAV systems, LNAV/VNAV NA below -16°C or above 39°C. When local altimeter setting not received, use Grissom ARB altimeter setting and increase LPV DA to 1026 feet, increase LNAV/VNAV DA to 1057 feet and visibilities all Cats 1/8 SM. Increase all MDAs 40 feet and LNAV visibility Cat C/D 1/8 SM, and Circling visibility Cat D 1/4 SM. Helicopter visibility reduction below 1 SM NA. Baro-VNAV and VDP NA when using Grissom ARB altimeter setting.	MISSED APPROACH: Climb to 1200, then climbing left turn to 2500 direct MONON and hold.
------------------------------	--	---

AWOS-3P 118.5	GRISSOM APP CON* 121.05 338.275	UNICOM 122.8 (CTAF) 0
-------------------------	---	---------------------------------



ELEV 738	D	TDZE 736
----------	----------	----------



CATEGORY	A	B	C	D
LPV DA		991-1	255 (300-1)	
LNAV/VNAV DA		1022-1	286 (300-1)	
LNAV MDA		1100-1	364 (400-1)	
CIRCLING	1180-1 442 (500-1)	1200-1 462 (500-1)	1280-1½ 542 (600-1½)	1400-2 662 (700-2)

MIRL Rwy 9-27 0
REIL Rwys 9 and 27 0

EC-2, 07 SEP 2023 to 05 OCT 2023

EC-2, 07 SEP 2023 to 05 OCT 2023