

LOC/DME I-BVX <b>109.7</b> Chan <b>34</b>	APP CRS <b>079°</b>	Rwy ldg TDZE Apt Elev	<b>6002</b> <b>463</b> <b>465</b>
---	------------------------	-----------------------------	---

# LOC RWY 8

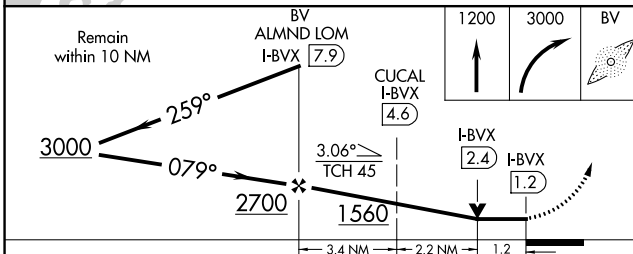
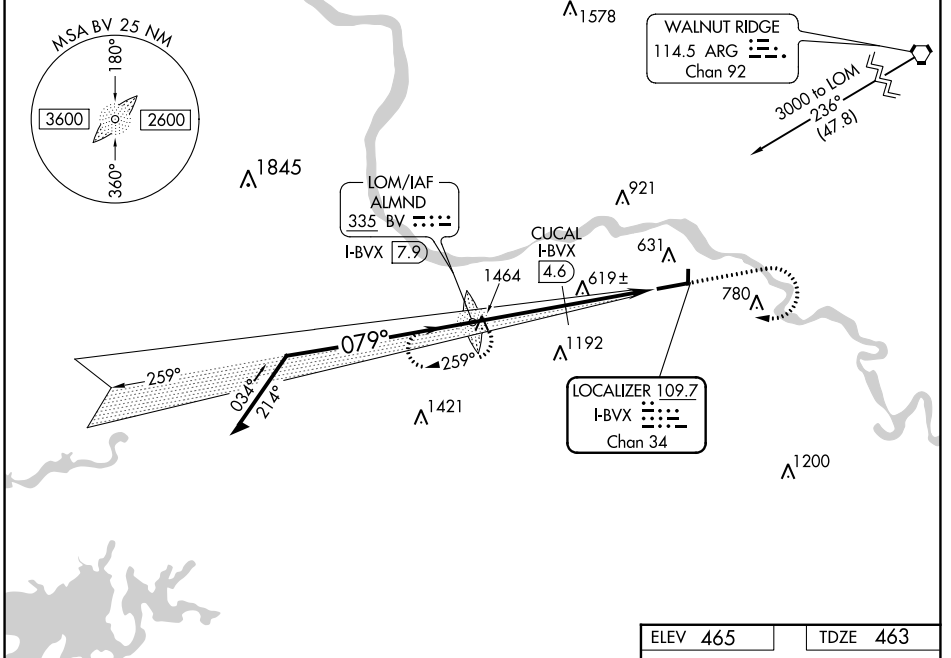
BATESVILLE RGNL (BVX)

ADF required for procedure entry.  
ADF required.

▼  
▲ NA Circling NA N of Rwy 8-26.

MISSED APPROACH: Climb to 1200 then climbing right turn to 3000 direct ALMND LOM/7.9 DME and hold.

AWOS-3PT <b>126.375</b>	MEMPHIS CENTER <b>126.85 281.55</b>	UNICOM <b>122.8 (CTAF) 0</b>
----------------------------	--	---------------------------------



ELEV 465	TDZE 463
<p>81</p> <p>2804 x 60</p> <p>0.9% UP</p> <p>36</p> <p>6002 x 150</p> <p>079° 6.8 NM from FAF</p>	
REIL Rws 8 and 26 0	
MIRL Rwy 8-26 0	
FAF to MAP 6.8 NM	
Knots	60 90 120 150 180
Min:Sec	6:48 4:32 3:24 2:43 2:16

CATEGORY	A	B	C	D
S-8	1560-1¼ 1097 (1100-1¼)	1560-1½ 1097 (1100-1½)	1560-3	1097 (1100-3)
CIRCLING	1560-1¼ 1095 (1100-1¼)	1560-1½ 1095 (1100-1½)	1560-3	1095 (1100-3)
CUCAL FIX MINIMUMS (DME REQUIRED)				
S-8	880-1	417 (500-1)	880-1¼	417 (500-1¼)
CIRCLING	980-1 515 (600-1)	1000-1 535 (600-1)	1220-2¼ 755 (800-2¼)	1400-3 935 (1000-3)

SC-1, 07 SEP 2023 to 05 OCT 2023

SC-1, 07 SEP 2023 to 05 OCT 2023