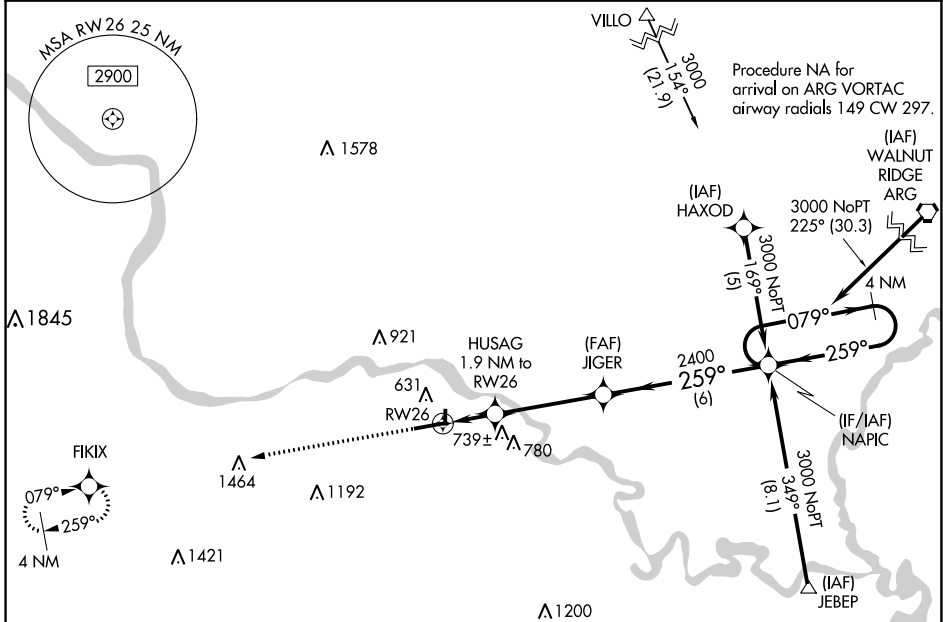


APP CRS	Rwy Idg	<b>6002</b>
<b>259°</b>	TDZE	<b>465</b>
	Apt Elev	<b>465</b>

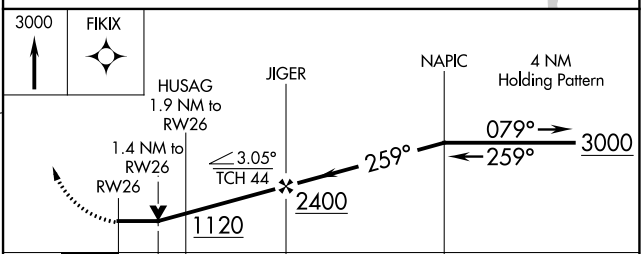
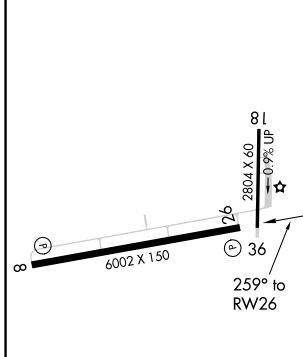
# RNAV (GPS) RWY 26

BATESVILLE RGNL (BVX)

RNP APCH.		MISSED APPROACH: Climb to 3000 direct FIKIX and hold.
<p><b>▽</b> Circling NA N of Rwy 8-26.</p> <p><b>▲</b> Rwy 26 helicopter visibility reduction below 3/4 SM NA.</p>		
AWOS-3PT	MEMPHIS CENTER	UNICOM
<b>126.375</b>	<b>126.85 281.55</b>	<b>122.8 (CTAF) 0</b>



ELEV 465	TDZE 465
----------	----------



CATEGORY	A	B	C	D
LNAV MDA	940-1	475 (500-1)	940-1 3/8 475 (500-1 3/8)	940-1 1/2 475 (500-1 1/2)
CIRCLING	980-1 515 (600-1)	1000-1 535 (600-1)	1220-2 1/4 755 (800-2 1/4)	1400-3 935 (1000-3)

REIL Rwy 8 and 26 **0**  
MIRL Rwy 8-26 **0**

BATESVILLE, ARKANSAS  
Amdt 1C 27JAN22

35°44'N-91°39'W

# RNAV (GPS) RWY 26

BATESVILLE RGNL (BVX)

SC-1, 07 SEP 2023 to 05 OCT 2023

SC-1, 07 SEP 2023 to 05 OCT 2023