

WAAS CH <b>65731</b> <b>W17A</b>	APP CRS <b>174°</b>	Rwy Idg <b>5862</b> TDZE <b>3244</b> Apt Elev <b>3245</b>
--	------------------------	---

# RNAV (GPS) RWY 17

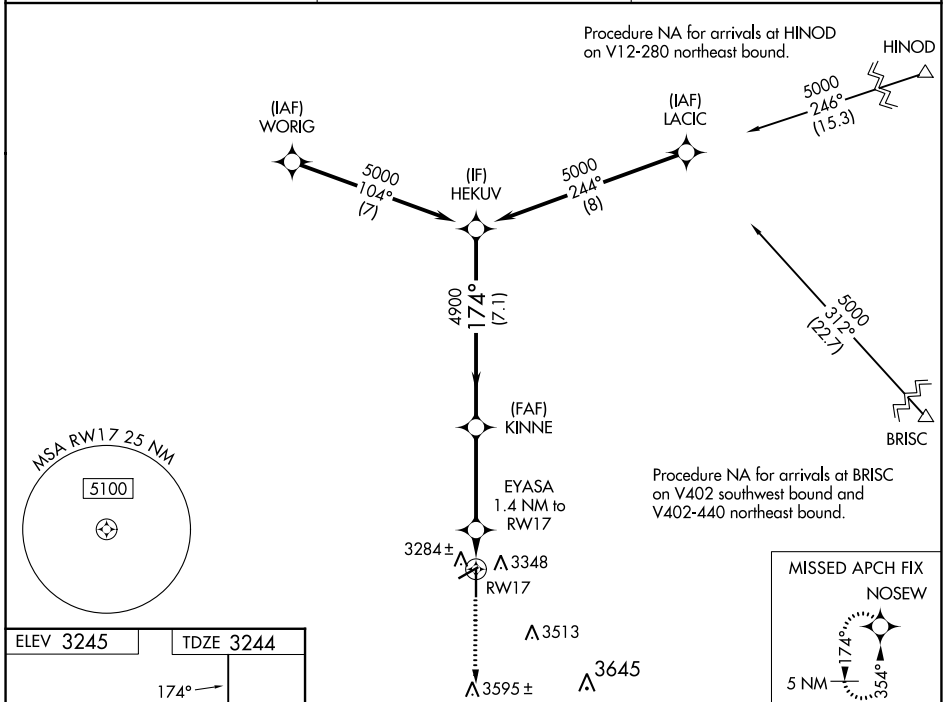
PERRY LEFORS FLD (PPA)

RNP APCH - GPS.

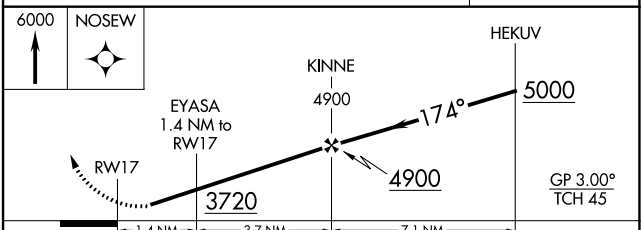
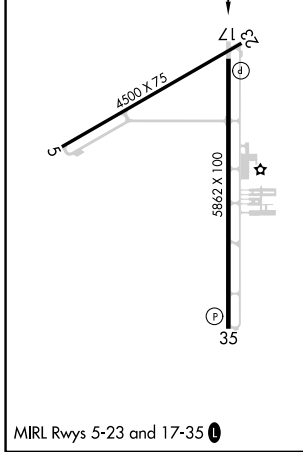
**▼** Rwy 17 helicopter visibility reduction below 1 SM NA. For uncompensated Baro-VNAV systems, LNAV/VNAV NA below -21 °C or above 54°C. Procedure NA at night.

**▲** MISSED APPROACH: Climb to 6000 direct NOSEW and hold, continue climb-in-hold to 6000.

AWOS-3 <b>118.725</b>	ALBUQUERQUE CENTER <b>127.85 285.475</b>	UNICOM <b>122.7 (CTAF) 0</b>
--------------------------	---	---------------------------------



ELEV 3245	TDZE 3244
-----------	-----------



CATEGORY	A	B	C	D
LPV DA		3494-3/4	250 (300-3/4)	
LNAV/VNAV DA		3494-3/4	250 (300-3/4)	
LNAV MDA		3540-1	296 (300-1)	
<input checked="" type="checkbox"/> CIRCLING	3700-1	455 (500-1)	3880-1 3/4 635 (700-1 3/4)	3960-2 1/4 715 (800-2 1/4)

SC-2, 07 SEP 2023 to 05 OCT 2023

SC-2, 07 SEP 2023 to 05 OCT 2023