

| | | |
|-------------|----------|-------------|
| APP CRS | Rwy Idg | 5070 |
| 261° | TDZE | 934 |
| | Apt Elev | 934 |

RNAV (GPS) RWY 26

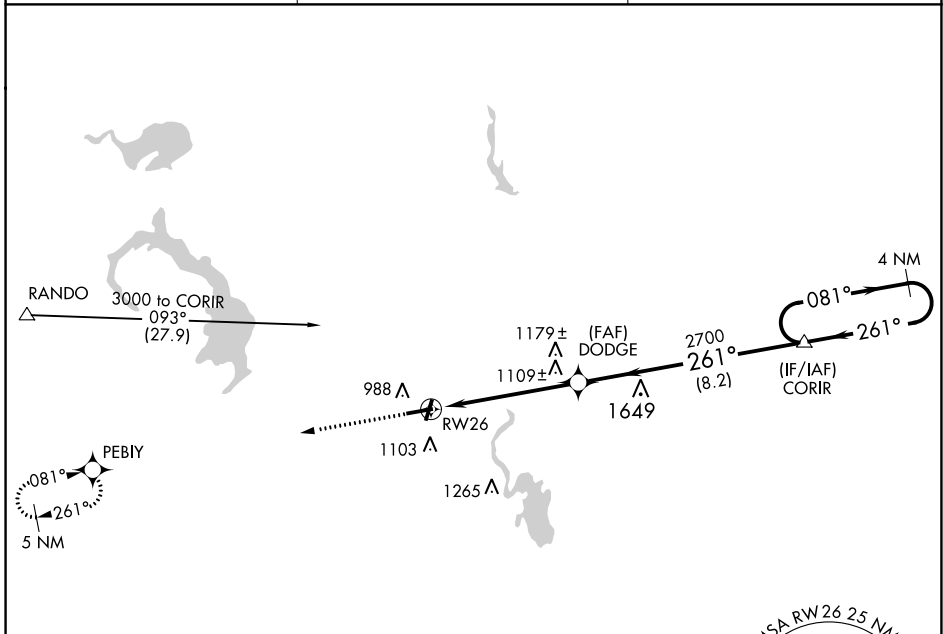
DODGE COUNTY (UNU)

⚠ When local altimeter setting not received, use Dane County Rgnl-Truax Fld altimeter setting and increase all MDAs 100 feet, and increase Circling Cat C visibility ¼ SM. DME/DME RNP-0.3 NA. Visibility reduction by helicopters NA. Inoperative table does not apply.

MALSF

MISSED APPROACH: Climb to 3000 direct PEBIY and hold.

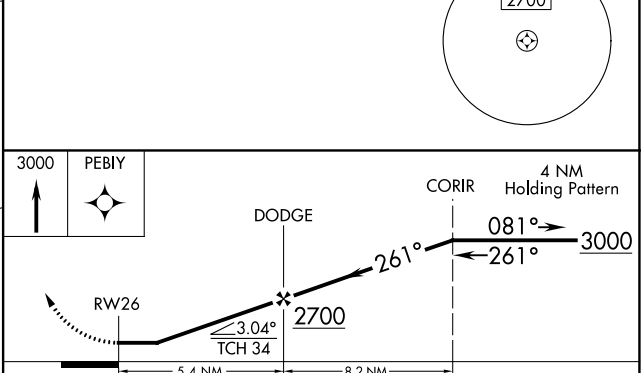
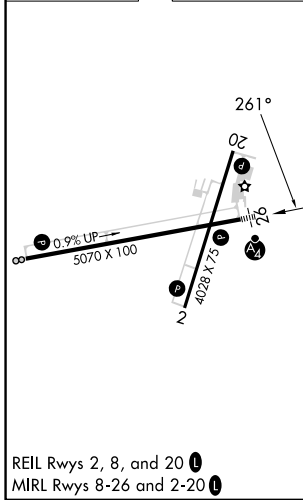
| | | |
|---------------------------------|---|--|
| AWOS-3 120.825 | MADISON APP CON * 119.15 343.7 | UNICOM 122.7 (CTAF) 1 |
|---------------------------------|---|--|



EC-3, 07 SEP 2023 to 05 OCT 2023

EC-3, 07 SEP 2023 to 05 OCT 2023

| | |
|----------|----------|
| ELEV 934 | TDZE 934 |
|----------|----------|



| CATEGORY | A | B | C | D |
|-------------------|--------|-------------|-------------------------|----|
| LNAV MDA | 1360-1 | 426 (500-1) | 1360-1¼ 426 (500-1¼) | NA |
| C CIRCLING | 1440-1 | 506 (600-1) | 1440-1½ 506 (600-1½) | NA |