

APP CRS	Rwy Idg	<b>3801</b>
<b>066°</b>	TDZE	<b>628</b>
	Apt Elev	<b>635</b>

# RNAV (GPS) RWY 6

JACK BARSTOW (IKW)

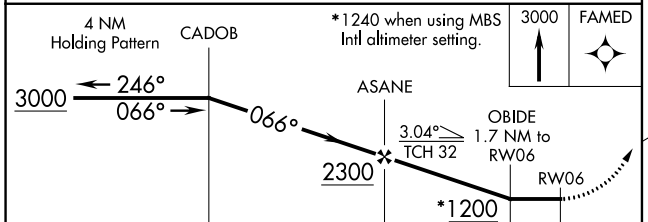
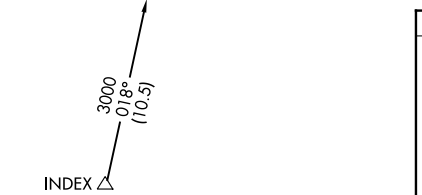
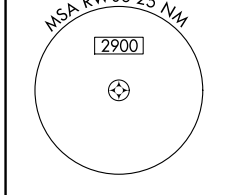
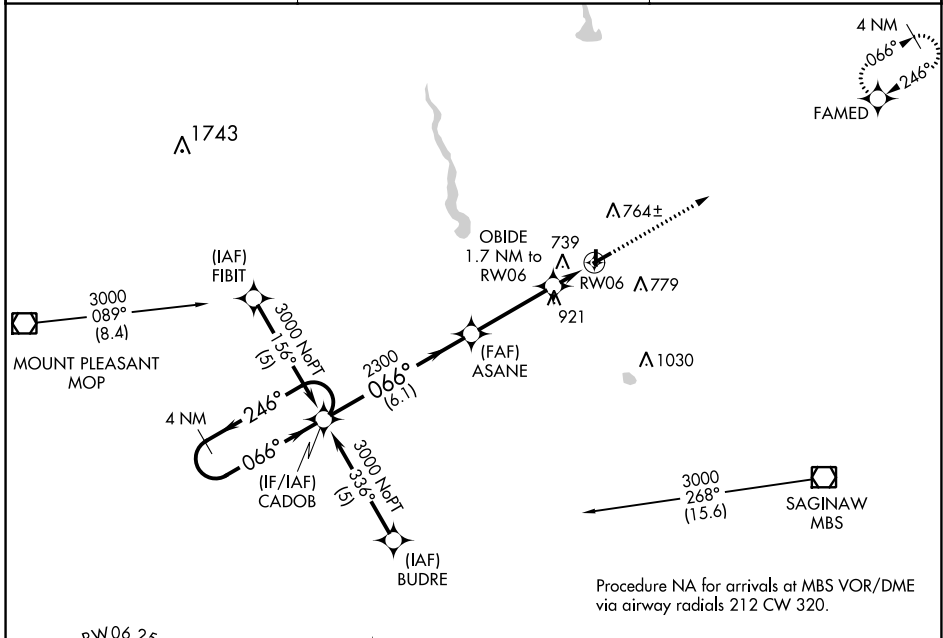
**▽** DME/DME RNP-0.3 NA. Rwy 24 helicopter visibility reduction below 3/4 SM NA.  
**▲** When local altimeter setting not received, use MBS Intl altimeter setting and increase all MDA 40 feet and LNAV Cat C visibility 1/4 mile. Circling Rwy 18, 36 NA at night.

MISSED APPROACH: Climb to 3000 direct FAMED and hold.

AWOS-3  
**119.525**

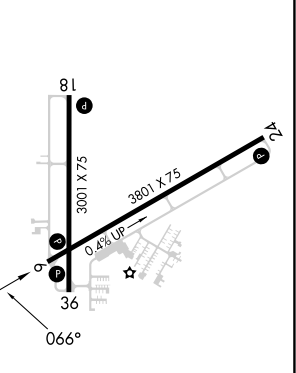
GREAT LAKES APP CON ★  
**126.45 235.625**

UNICOM  
**122.8 (CTAF) 0**



Procedure NA for arrivals at MBS VOR/DME via airway radials 212 CW 320.

ELEV 635	TDZE 628
----------	----------



CATEGORY	A	B	C	D
LNAV MDA	1000-1	372 (400-1)		NA
CIRCLING	1120-1	485 (500-1)	1240-1 3/4 605 (700-1 3/4)	NA

REIL Rwy 6, 18, 24, and 36 0  
 MIRL Rwy 6-24 and 18-36 0

EC-1, 07 SEP 2023 to 05 OCT 2023

EC-1, 07 SEP 2023 to 05 OCT 2023