

MIDLAND, MICHIGAN

AL-5476 (FAA)

23222

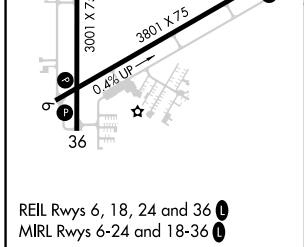
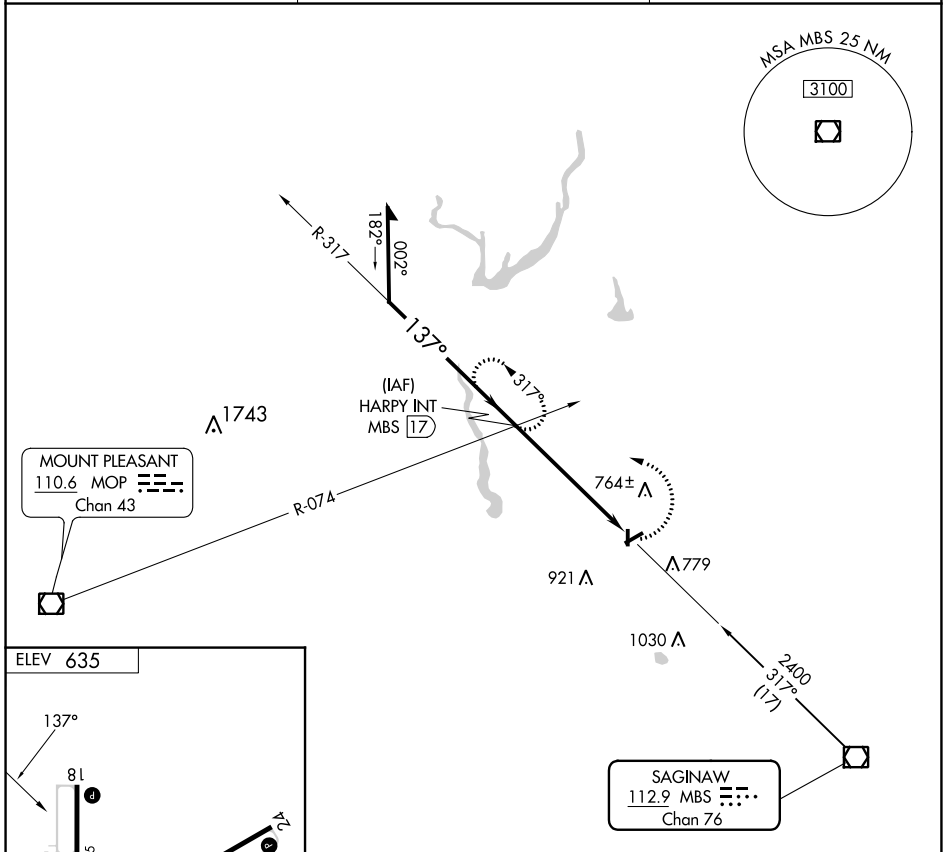
| | | |
|---|------------------------|--|
| VOR/DME MBS 112.9 Chan 76 | APP CRS 137° | Rwy Idg TDZE Apt Elev N/A 635 |
|---|------------------------|--|

VOR-A
JACK BARSTOW (IKW)

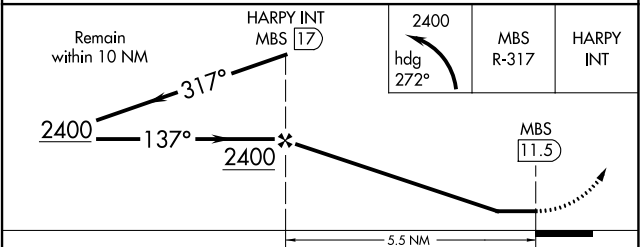
⚠ When local altimeter setting not received, use MBS Intl altimeter setting and increase all MDA 40 feet. Circling Rwy 18, 36 NA at night.
⚠ Rwy 18, 36 helicopter visibility reduction below 1 SM NA.

MISSED APPROACH: Climbing left turn to 2400 via heading 272° and MBS VOR/DME R-317 to HARRY INT/17 DME and hold.

| | | |
|--------------------------|--|---------------------------------|
| AWOS-3 119.525 | GREAT LAKES APP CON ★ 126.45 235.625 | UNICOM 122.8 (CTAF) 0 |
|--------------------------|--|---------------------------------|



| | | | | | |
|-------------------|------|------|------|------|------|
| FAF to MAP 5.5 NM | | | | | |
| Knots | 60 | 90 | 120 | 150 | 180 |
| Min:Sec | 5:30 | 3:40 | 2:45 | 2:12 | 1:50 |



| | | | | |
|----------|--------|-------------|-------------------------|----|
| CATEGORY | A | B | C | D |
| CIRCLING | 1140-1 | 505 (600-1) | 1240-1¾ 605 (700-1¾) | NA |

MIDLAND, MICHIGAN
Amdt 7B 22APR21

43°40'N-84°16'W

JACK BARSTOW (IKW)
VOR-A

EC-1, 07 SEP 2023 to 05 OCT 2023

EC-1, 07 SEP 2023 to 05 OCT 2023