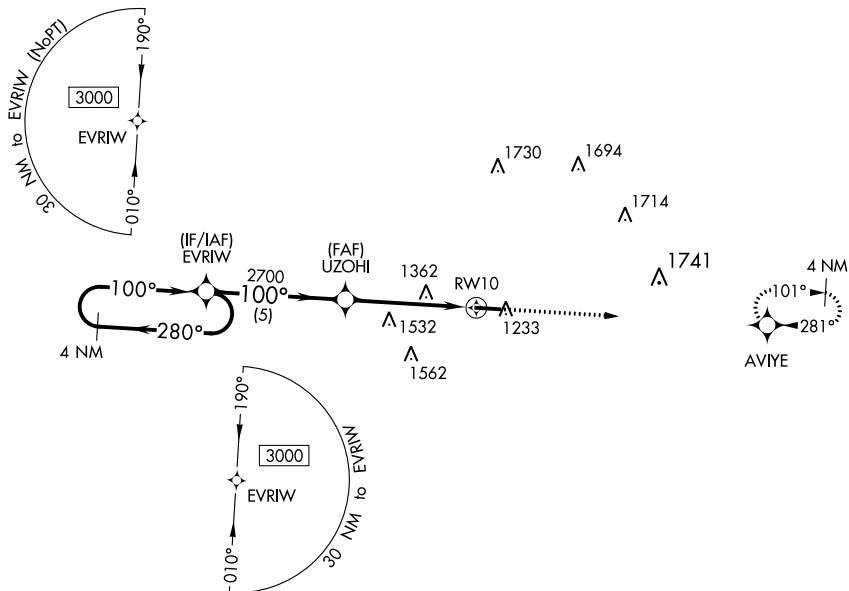


WAAS CH <b>77534</b> <b>W10A</b>	APP CRS <b>100°</b>	Rwy Idg TDZE <b>1172</b> Apt Elev <b>1184</b>	<b>5000</b>
--	------------------------	---	-------------

# RNAV (GPS) RWY 10

HILLSDALE MUNI (JYM)

<p><b>▽</b> For uncompensated Baro-VNAV systems, LNAV/VNAV NA below -17°C (2°F) or above 54°C (130°F). DME/DME RNP-0.3 NA.</p>		<p>MISSED APPROACH: Climb to 3100 direct AVIYE and hold.</p>
<p>AWOS-3 <b>121.025</b></p>	<p>TOLEDO APP CON <b>134.35 317.55</b></p>	<p>UNICOM <b>122.8 (CTAF) 0</b></p>



EC-1, 07 SEP 2023 to 05 OCT 2023

EC-1, 07 SEP 2023 to 05 OCT 2023

ELEV 1184	TDZE 1172
-----------	-----------

REIL Rwy 10 and 28 **0**  
HIRL Rwy 10-28 **0**

4 NM Holding Pattern

3100 AVIYE

GP 3.00° TCH 46

\*1.6 NM to RWY 10

\*LNAV only

CATEGORY	A	B	C	D
LPV DA	1441-1	269 (300-1)		NA
LNAV/VNAV DA	1601-1½	429 (500-1½)		NA
LNAV MDA	1720-1	548 (600-1)	1720-1⅝ 548 (600-1⅝)	NA
<b>C</b> CIRCLING	1720-1	536 (600-1)	1720-1⅝ 536 (600-1⅝)	NA