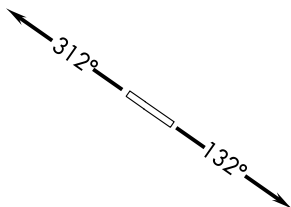


(BARI2.BARII) 19227  
**BARII TWO DEPARTURE (RNAV)**

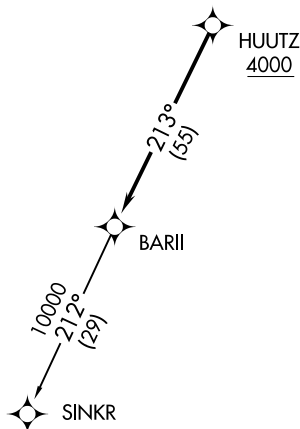
LIVINGSTON COUNTY SPENCER J HARDY (OZW)  
AL-5485 (FAA) HOWELL, MICHIGAN

**TOP ALTITUDE:  
ASSIGNED BY ATC**

AWOS-3  
118.875  
CLNC DEL  
121.725  
CTAF  
123.0  
DETROIT DEP CON  
132.35 284.0



TAKEOFF MINIMUMS:  
Standard.



NOTE: RNAV 1.  
NOTE: RADAR required.  
NOTE: DME/DME/IRU or GPS required.  
NOTE: Turbojet departures at/above 10000,  
maintain 280K until advised by ATC.

NOTE: Chart not to scale.

**DEPARTURE ROUTE DESCRIPTION**

TAKEOFF RUNWAY 13: Climb on heading 132° or as assigned for RADAR vectors to cross HUUTZ at or above 4000, thence....

TAKEOFF RUNWAY 31: Climb on heading 312° or as assigned for RADAR vectors to cross HUUTZ at or above 4000, thence....

....on track 213° to BARII, then on (transition). Maintain ATC assigned altitude, expect filed altitude 10 minutes after departure.

SINKR TRANSITION (BARI2.SINKR):

**BARII TWO DEPARTURE (RNAV)**  
(BARI2.BARII) 15AUG19

HOWELL, MICHIGAN  
LIVINGSTON COUNTY SPENCER J HARDY (OZW)

EC-1, 07 SEP 2023 to 05 OCT 2023

EC-1, 07 SEP 2023 to 05 OCT 2023