

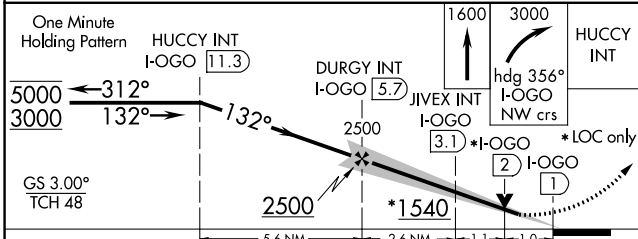
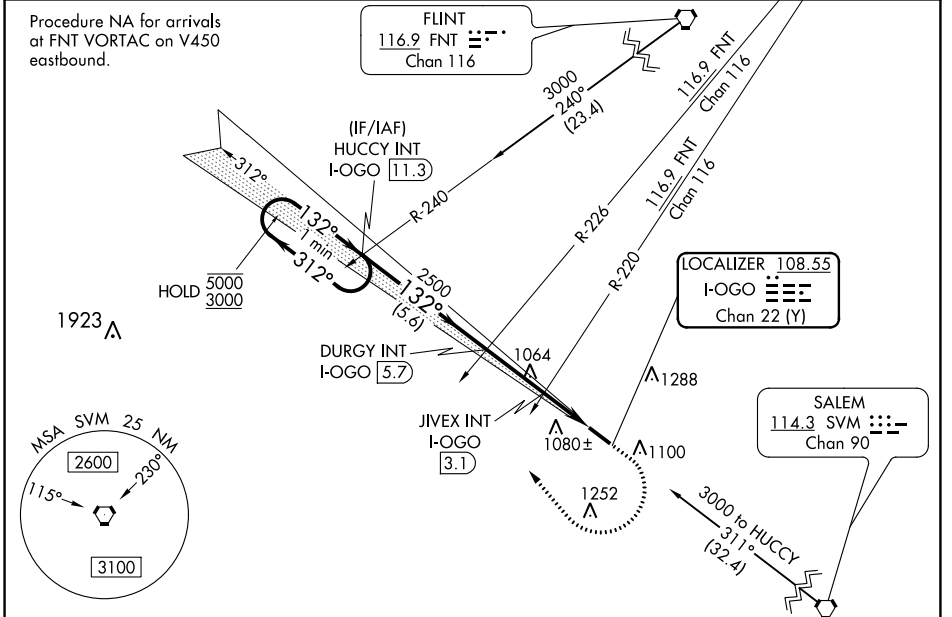
LOC/DME I-OGO 108.55 Chan 22 (Y)	APP CRS 132°	Rwy Idg 5002 TDZE 962 Apt Elev 962
--	------------------------	---

ILS or LOC RWY 13

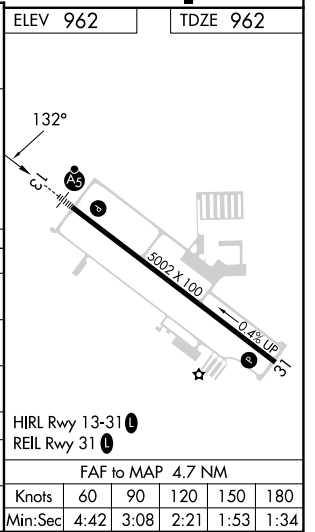
LIVINGSTON COUNTY SPENCER J HARDY (OZW)

<p>▼ For inop ALS, increase LOC Cat C and D visibility to 1½ SM, and JIVEX fix minimums S-13 Cat C and D visibility to 1 SM.</p> <p>▲ NA</p>	<p>MALSRL</p>	<p>MISSED APPROACH: Climb to 1600 then climbing right turn to 3000 heading 356° and I-OGO NW course to HUCCY INT/ I-OGO 11.3 DME and hold.</p>
--	---------------	--

AWOS-3 118.875	DETROIT APP CON 132.35 284.0	CLNC DEL 121.725 (GCO)	UNICOM 123.0 (CTAF) 0
--------------------------	--	----------------------------------	---------------------------------



CATEGORY	A	B	C	D
S-ILS 13		1162-½	200 (200-½)	
S-LOC 13	1540-½	578 (600-½)	1540-1¼	578 (600-1¼)
CIRCLING	1540-1	578 (600-1)	1600-1¾ 638 (700-1¾)	1600-2 638 (700-2)
JIVEX FIX MINIMUMS (DUAL VOR RECEIVERS OR DME REQUIRED)				
S-LOC 13	1320-½	358 (400-½)	1320-5/8	358 (400-5/8)
CIRCLING	1400-1 438 (500-1)	1420-1 458 (500-1)	1600-1¾ 638 (700-1¾)	1600-2 638 (700-2)



ILS or LOC RWY 13

EC-1, 07 SEP 2023 to 05 OCT 2023

EC-1, 07 SEP 2023 to 05 OCT 2023