

(KAYLN2.KAYLN) 19227

# KAYLN TWO DEPARTURE (RNAV)

LIVINGSTON COUNTY SPENCER J HARDY (OZW)  
AL-5485 (FAA)  
HOWELL, MICHIGAN

EC-1, 07 SEP 2023 to 05 OCT 2023

**TOP ALTITUDE:  
ASSIGNED AT ATC**

AWOS-3  
118.875  
CINC DEL  
121.725  
CTAF  
123.0  
DETROIT DEP CON  
132.35 284.0

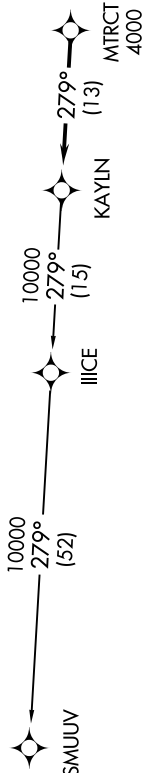
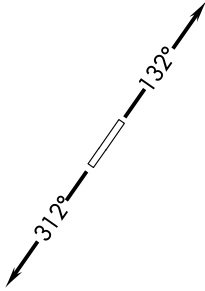
TAKEOFF MINIMUMS:  
Standard.

NOTE: RNAV 1.

NOTE: RADAR required.

NOTE: DME/DME/IRU or GPS required.

NOTE: Turbojet departures at/above 10000,  
maintain 280K until advised by ATC.



NOTE: Chart not to scale.

## DEPARTURE ROUTE DESCRIPTION

TAKEOFF RUNWAY 13: Climb on heading 132° or as assigned for RADAR vectors to cross MTRCT at or above 4000, thence....  
TAKEOFF RUNWAY 31: Climb on heading 312° or as assigned for RADAR vectors to cross MTRCT at or above 4000, thence....

....on track 279° to KAYLN, then on (transition). Maintain ATC assigned altitude, expect filed altitude 10 minutes after departure.

SMUUV TRANSITION (KAYLN2.SMUUV):

KAYLN TWO DEPARTURE (RNAV)  
(KAYLN2.KAYLN) 15AUG19

HOWELL, MICHIGAN  
LIVINGSTON COUNTY SPENCER J HARDY (OZW)

EC-1, 07 SEP 2023 to 05 OCT 2023