

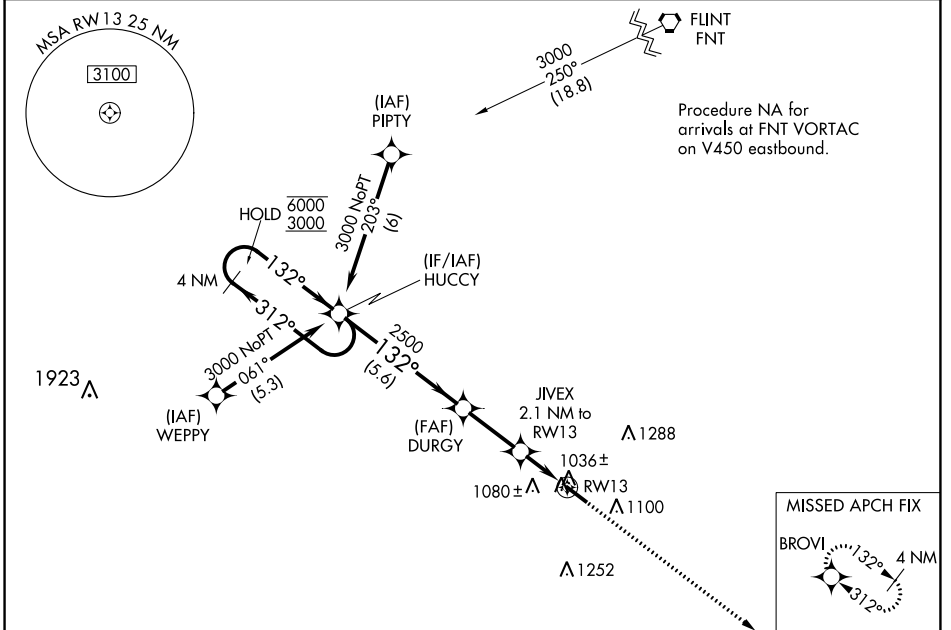
WAAS CH <b>69601</b> <b>W13A</b>	APP CRS <b>132°</b>	Rwy Idg <b>5002</b> TDZE <b>962</b> Apt Elev <b>962</b>
--	------------------------	---

# RNAV (GPS) RWY 13

LIVINGSTON COUNTY SPENCER J HARDY (OZW)

RNP APCH.	MALS R	MISSED APPROACH: Climb to 2800 direct BROVI and hold.
<p>⚠ For uncompensated Baro-VNAV systems, LNAV/VNAV NA below -16°C or above 37°C. For inop ALS, increase LNAV/VNAV all Cats visibility to ¾ SM.</p>		

AWOS-3 <b>118.875</b>	DETROIT APP CON <b>132.35 284.0</b>	CLNC DEL <b>121.725 (GCO)</b>	UNICOM <b>123.0 (CTAF) 0</b>
--------------------------	--	----------------------------------	---------------------------------



4 NM Holding Pattern HUCCY		2800 BROVI		
<p>6000 ← 312°</p> <p>3000 → 132°</p> <p>GP 3.00° TCH 48</p>		<p>2500 DURGY</p> <p>JIVEX 2.1 NM to RWY 13</p> <p>*LNAV only</p> <p>*0.9 NM to RWY 13</p> <p>RWY 13</p>		
5.6 NM		2.6 NM		
1.2 NM		0.9 NM		
CATEGORY	A	B	C	D
LPV DA		1162-½	200 (200-½)	
LNAV/VNAV DA		1212-½	250 (300-½)	
LNAV MDA		1300-½	338 (400-½)	
CIRCLING	1400-1 438 (500-1)	1420-1 458 (500-1)	1600-1¾ 638 (700-1¾)	1600-2 638 (700-2)

EC-1, 07 SEP 2023 to 05 OCT 2023

EC-1, 07 SEP 2023 to 05 OCT 2023