

(SNDRS2.SNDRS) 19227

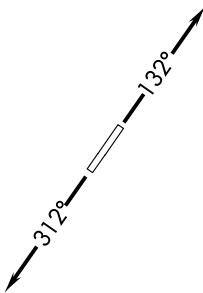
SNDRS TWO DEPARTURE (RNAV)

LIVINGSTON COUNTY SPENCER J HARDY (OZW)
AL-5485 (FAA)
HOWELL, MICHIGAN

EC-1, 07 SEP 2023 to 05 OCT 2023

**TOP ALTITUDE:
ASSIGNED BY ATC**

AWOS-3
118.875
CLNC DEL
121.725
CTAF
123.0
DETROIT DEP CON
132.35 284.0



DEPARTURE ROUTE DESCRIPTION

TAKEOFF RUNWAY 13: Climb on heading 132° or as assigned for RADAR vectors to cross JWELS at or above 4000, thence....

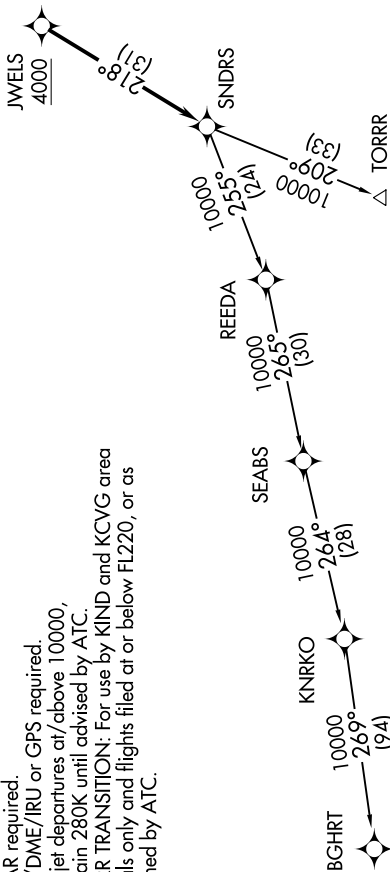
TAKEOFF RUNWAY 31: Climb on heading 312° or as assigned for RADAR vectors to cross JWELS at or above 4000, thence....

...on track 218° to SNDRS, then on (transition). Maintain ATC assigned altitude, expect filed altitude 10 minutes after departure.

BGHR TRANSITION (SNDRS2.BGHR):
TORR TRANSITION (SNDRS2.TORR):

NOTE: RNAV 1.
NOTE: RADAR required.
NOTE: DME/DME/IRU or GPS required.
NOTE: Turbjet departures at/above 10000, maintain 280K until advised by ATC.
NOTE: TORR TRANSITION: For use by KIND and KCVG area arrivals only and flights filed at or below FL220, or as assigned by ATC.

TAKEOFF MINIMUMS:
Standard.



NOTE: Chart not to scale.

SNDRS TWO DEPARTURE (RNAV)

(SNDRS2.SNDRS) 15AUG19

HOWELL, MICHIGAN
LIVINGSTON COUNTY SPENCER J HARDY (OZW)

EC-1, 07 SEP 2023 to 05 OCT 2023