

(ZETTR3.ZETTR) 19339

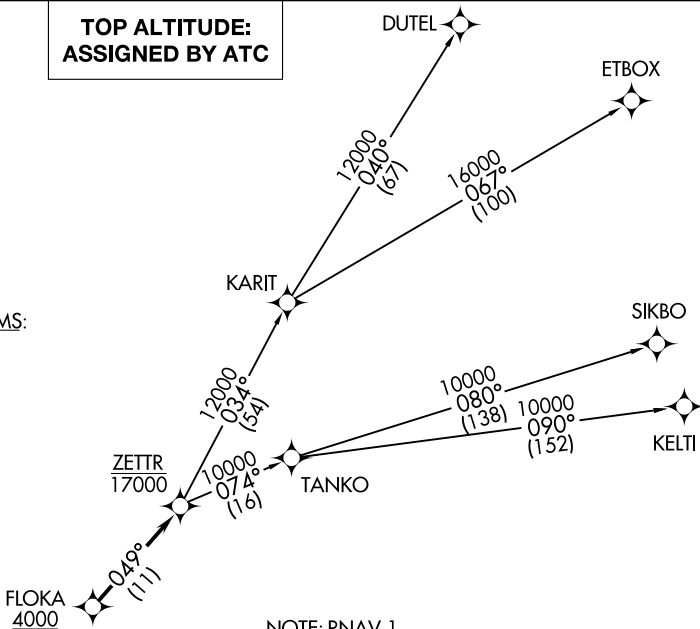
# ZETTR THREE DEPARTURE (RNAV)

LIVINGSTON COUNTY SPENCER J HARDY (OZW)  
AL-5485 (FAA) HOWELL, MICHIGAN

AWOS-3  
118.875  
CLNC DEL  
121.725  
CTAF  
123.0  
DETROIT DEP CON  
132.35 284.0

**TOP ALTITUDE:  
ASSIGNED BY ATC**

TAKEOFF MINIMUMS:  
Standard.



- NOTE: RNAV 1.
- NOTE: RADAR required.
- NOTE: DME/DME/IRU or GPS required.
- NOTE: Turbojet departures at/above 10000, maintain 280K until advised by ATC.
- NOTE: TANKO TRANSITION: For use by CYYZ area arrivals only, or as assigned by ATC.

## DEPARTURE ROUTE DESCRIPTION

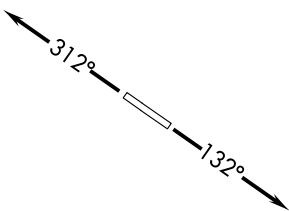
**TAKEOFF RUNWAY 13:** Climb on heading 132° or as assigned for RADAR vectors to cross FLOKA at or above 4000, thence....

**TAKEOFF RUNWAY 31:** Climb on heading 312° or as assigned for RADAR vectors to cross FLOKA at or above 4000, thence....

....on track 049° to cross ZETTR at or below 17000, then on (transition). Maintain ATC assigned altitude, expect filed altitude 10 minutes after departure.

- DUTEL TRANSITION (ZETTR3.DUTEL):
- ETBOX TRANSITION (ZETTR3.ETBOX):
- KELTI TRANSITION (ZETTR3.KELTI):
- SIKBO TRANSITION (ZETTR3.SIKBO):
- TANKO TRANSITION (ZETTR3.TANKO):

NOTE: Chart not to scale.



ZETTR THREE DEPARTURE (RNAV)  
(ZETTR3.ZETTR) 05DEC19

HOWELL, MICHIGAN  
LIVINGSTON COUNTY SPENCER J HARDY (OZW)

EC-1, 07 SEP 2023 to 05 OCT 2023

EC-1, 07 SEP 2023 to 05 OCT 2023