

WAAS CH 70538 W17A	APP CRS 168°	Rwy Idg 5010 TDZE 943 Apt Elev 951
--	------------------------	---

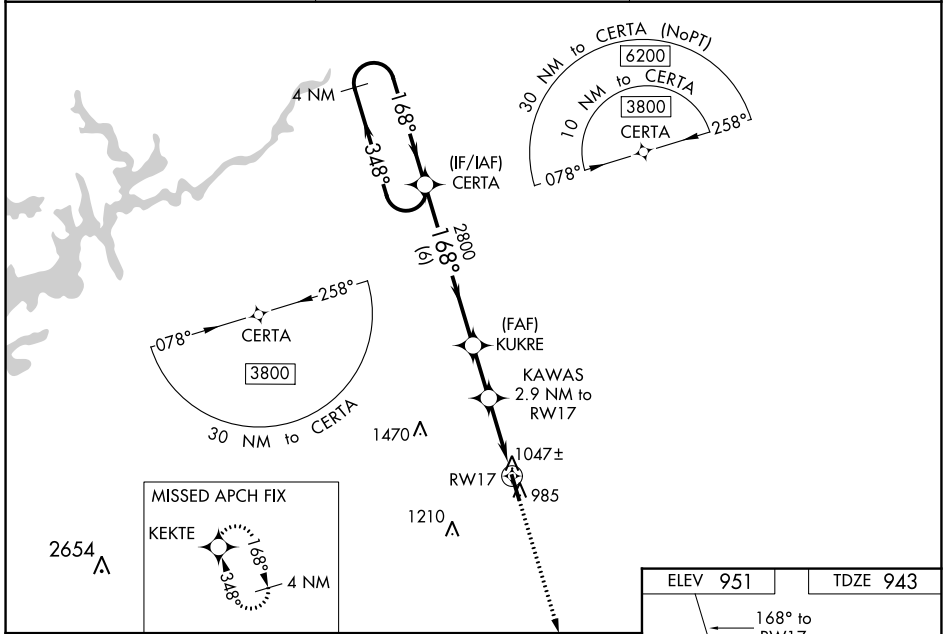
RNAV (GPS) RWY 17

JACKSON COUNTY (JCA)

⚠ For uncompensated Baro-VNAV systems, LNAV/VNAV NA below -16°C (4°F) or above 53°C (128°F). Circling NA for Cat D west of Rwy 17-35. Baro-VNAV and VDP NA when using Winder altimeter setting. DME/DME RNP-0.3 NA. Helicopter visibility reduction below ¼ SM NA. When local altimeter setting not received, use Winder altimeter setting: increase LPV DA to 1310 feet and increase LNAV/VNAV DA to 1363 feet and all MDA 40 feet; increase LNAV/VNAV visibility all Cats and LNAV Cat C visibility ½ mile; increase Circling Cat C visibility ¼ mile.

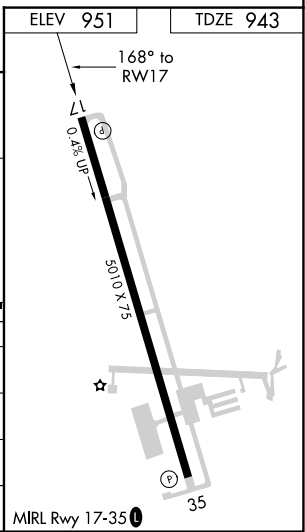
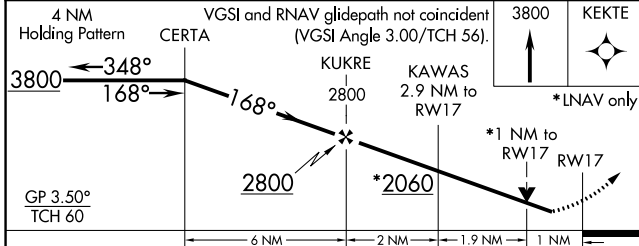
MISSED APPROACH: Climb to 3800 direct KEKTE and hold.

AWOS-3PT 118.125	ATLANTA APP CON * 132.475 291.1	UNICOM 122.975 (CTAF) ☺
----------------------------	---	-----------------------------------



SE-4, 07 SEP 2023 to 05 OCT 2023

SE-4, 07 SEP 2023 to 05 OCT 2023



CATEGORY	A	B	C	D
LPV DA	1279-1	336 (400-1)		NA
LNAV/VNAV DA	1332-1½	389 (400-1½)		NA
LNAV MDA	1320-1	377 (400-1)		
C CIRCLING	1440-1	489 (500-1)	1520-1½ 569 (600-1½)	1520-2 569 (600-2)