

WAAS CH 82704 W35A	APP CRS 348°	Rwy ldg 5010 TDZE 951 Apt Elev 951
--	------------------------	---

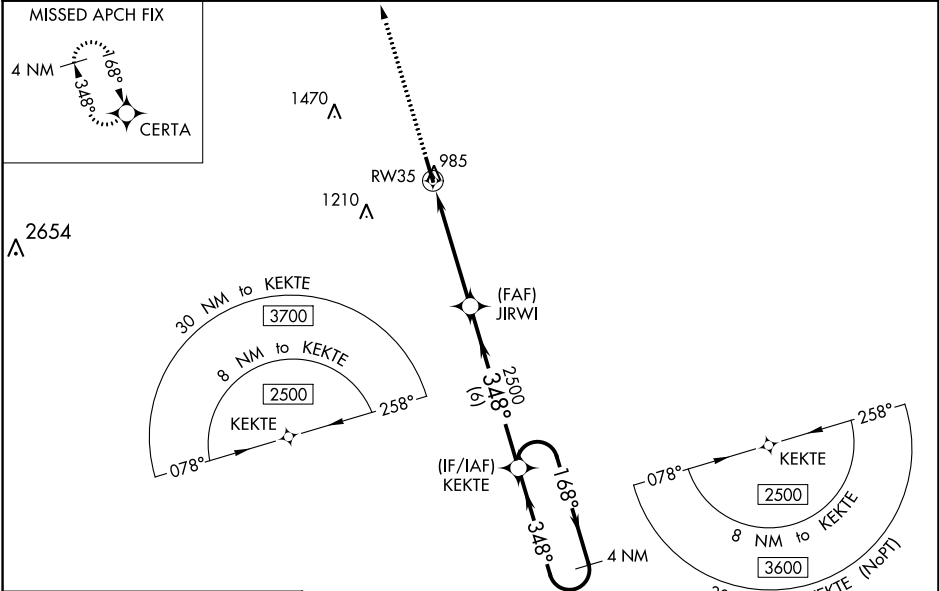
RNAV (GPS) RWY 35

JACKSON COUNTY (JCA)

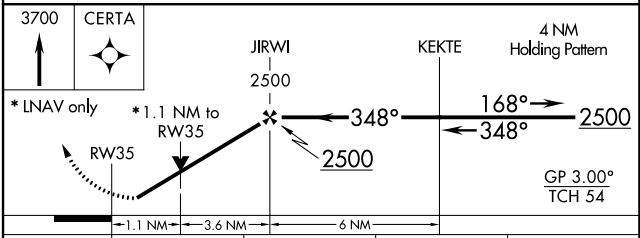
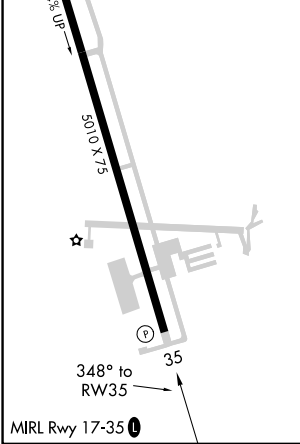
⚠ For uncompensated Baro-VNAV systems, LNAV/VNAV NA below -16°C (4°F) or above 54°C (130°F). Circling NA for Cat D west of Rwy 17-35. Baro-VNAV and VDP NA when using Winder altimeter setting. DME/DME RNP-0.3 NA. Helicopter visibility reduction below ¾ SM NA. When local altimeter setting not received, use Winder altimeter setting: increase LPV DA to 1232 feet and LNAV/VNAV DA to 1241 feet and all MDA 40 feet; increase LPV visibility all Cats, LNAV/VNAV visibility all Cats, and LNAV Cat C/D visibility ¼ mile; increase Circling Cat C visibility ¼ mile.

MISSED APPROACH:
Climb to 3700 direct CERTA and hold.

AWOS-3PT 118.125	ATLANTA APP CON * 132.475 291.1	UNICOM 122.975 (CTAF) ①
----------------------------	---	-----------------------------------



ELEV 951	TDZE 951
-----------------	-----------------



CATEGORY	A	B	C	D
LPV DA		1201-¾	250 (300-¾)	
LNAV/VNAV DA		1210-¾	259 (300-¾)	
LNAV MDA	1340-1	389 (400-1)	1340-1½	389 (400-1½)
C CIRCLING	1440-1	489 (500-1)	1520-1½ 569 (600-1½)	1520-2 569 (600-2)

SE-4, 07 SEP 2023 to 05 OCT 2023

SE-4, 07 SEP 2023 to 05 OCT 2023