

VOR/DME AHN <b>116.95</b> Chan <b>116(Y)</b>	APP CRS <b>319°</b>	Rwy Idg <b>5010</b> TDZE <b>951</b> Apt Elev <b>951</b>
--	------------------------	---

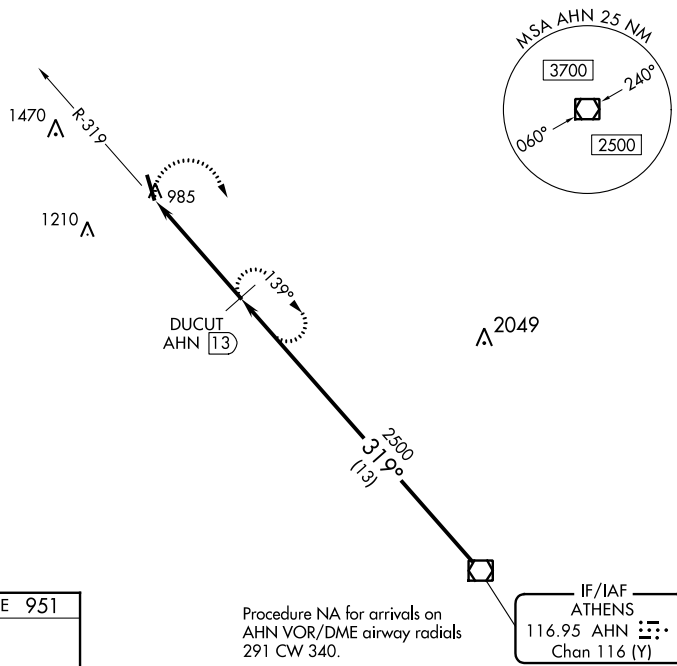
# VOR/DME RWY 35

JACKSON COUNTY (JCA)

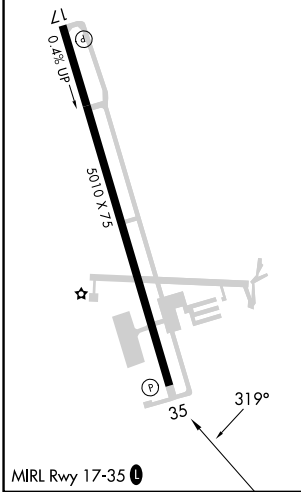
**⚠** Night Landing: Rwy 35 NA. Circling NA for Cat D west of Rwy 17-35.  
**⚠** Helicopter visibility reduction below 1 SM NA. When local altimeter setting not received, use Winder altimeter setting and increase all MDA 40 feet and S-35 Cats C/D visibility 1/8 mile and Circling Cat C visibility 1/4 mile.

**MISSED APPROACH:** Climbing right turn to 2500 on heading 210° and AHN VOR/DME R-319 to DUCUT/AHN 13 DME and hold.

AWOS-3PT <b>118.125</b>	ATLANTA APP CON ★ <b>132.475 291.1</b>	UNICOM <b>122.975 (CTAF) 0</b>
----------------------------	---	-----------------------------------



ELEV <b>951</b>	TDZE <b>951</b>
-----------------	-----------------



2500 hdg 210°	AHN R-319	DUCUT AHN 13	AHN VOR/DME
DUCUT AHN 13		2500	2500
AHN 17.7		319°	
≤3.00° TCH 54			
4.7 NM		13 NM	
CATEGORY	A	B	C
S-35	1380-1	429 (500-1)	1380-1 1/4 429 (500-1 1/4)
<b>C</b> CIRCLING	1440-1	489 (500-1)	1520-1 1/2 569 (600-1 1/2) 1520-2 569 (600-2)

SE-4, 07 SEP 2023 to 05 OCT 2023

SE-4, 07 SEP 2023 to 05 OCT 2023