

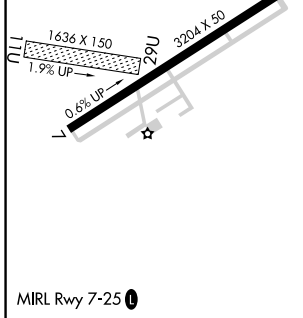
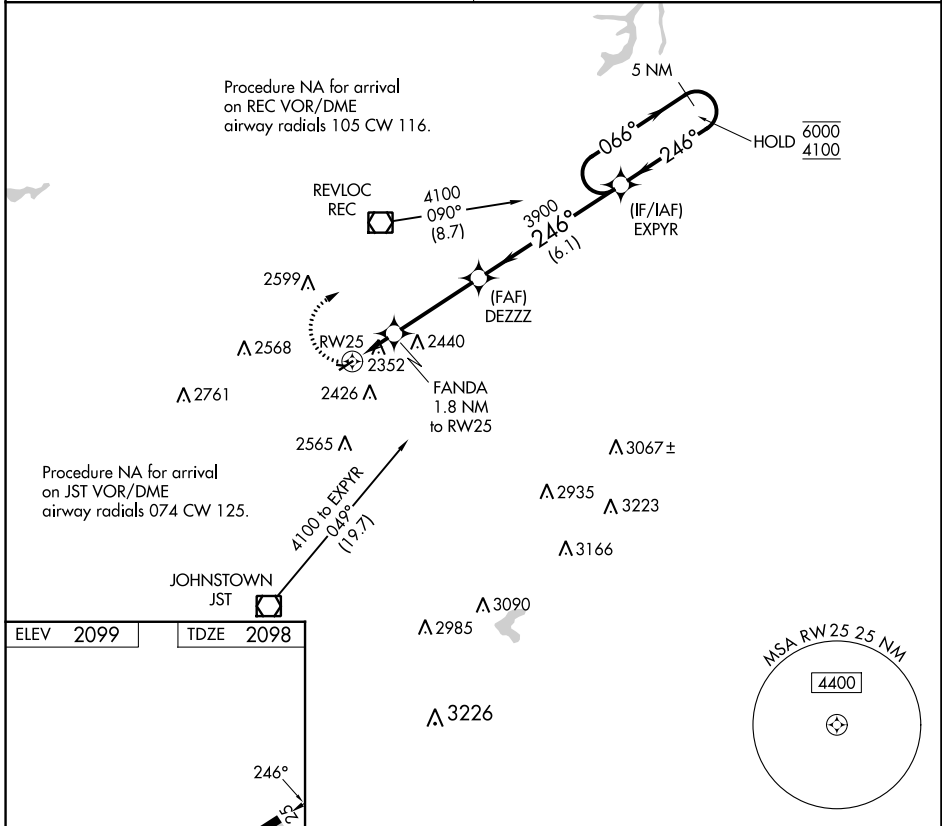
APP CRS	Rwy Idg	<b>3204</b>
<b>246°</b>	TDZE	<b>2098</b>
	Apt Elev	<b>2099</b>

# RNAV (GPS) RWY 25

EBENSBURG (9G8)

RNP APCH.	Procedure NA at night. Rwy 25 helicopter visibility reduction below 1 SM NA. Obtain local altimeter setting on CTAF; when not received, use Johnstown altimeter setting and increase all MDA 60 feet and LNAV Cat C visibility ¼ SM.	MISSED APPROACH: Climbing right turn to 4100 direct EXPYR and hold.
Procedure NA Obtain local altimeter setting on CTAF; when not received, use Johnstown altimeter setting and increase all MDA 60 feet and LNAV Cat C visibility ¼ SM.		

JOHNSTOWN APP CON *	UNICOM
<b>121.2 299.2</b>	<b>122.8 (CTAF)</b>



4100	EXPYR	Visual Segment - Obstacles.	5 NM Holding Pattern
		DEZZZ	EXPYR
RW25		3900	6000
1.8 NM		3.6 NM	6.1 NM
CATEGORY	A	B	C
LNAV MDA	2620-1	522 (600-1)	2620-1½ 522 (600-1½)
			NA

NE-4, 07 SEP 2023 to 05 OCT 2023

NE-4, 07 SEP 2023 to 05 OCT 2023