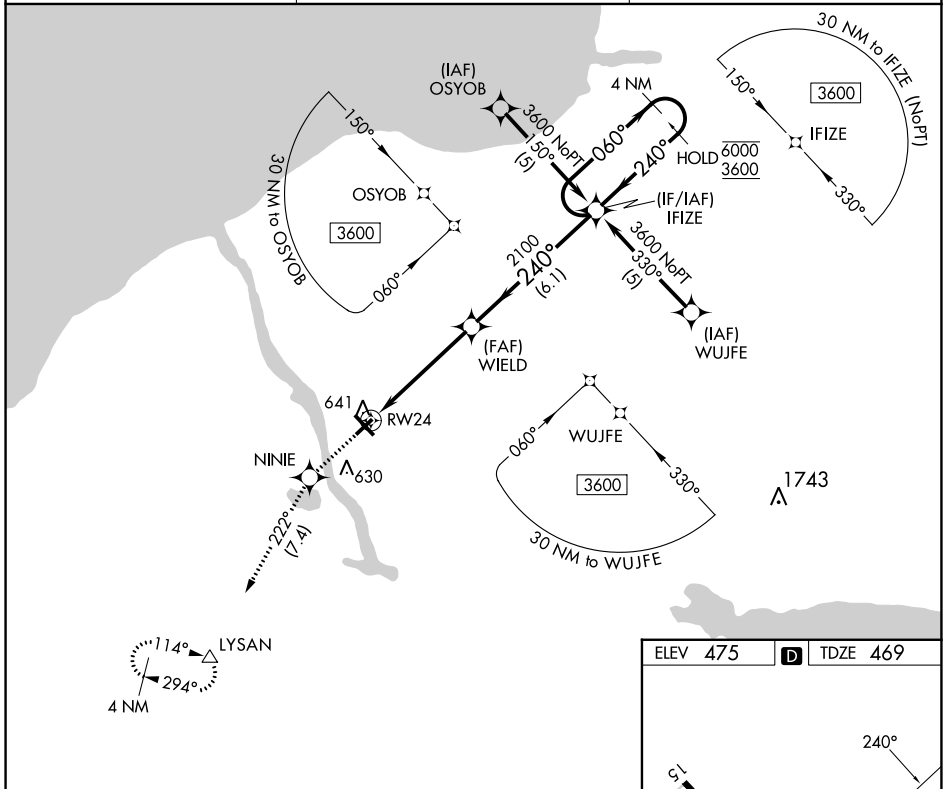


APP CRS <b>240°</b>	Rwy Idg <b>3997</b>
	TDZE <b>469</b>
	Apt Elev <b>475</b>

# RNAV (GPS) RWY 24

OSWEGO COUNTY (FZY)

RNP APCH.		MISSED APPROACH: Climb to 3000 direct NINIE and on track 222° to LYSAN and hold.
Rwy 24 helicopter visibility reduction below 1 SM NA.		
ASOS <b>119.275</b>	SYRACUSE APP CON <b>126.125 269.125</b>	UNICOM <b>123.0 (CTAF) 0</b>



NE-2, 07 SEP 2023 to 05 OCT 2023

NE-2, 07 SEP 2023 to 05 OCT 2023

3000	NINIE	LYSAN		
↑	✧	tr 222°	△	
WIELD		IFIZE		
RWY 24		4 NM Holding Pattern		
3.04° TCH 40		060° → 6000		
4.9 NM		← 240° 3600		
6.1 NM				
CATEGORY	A	B	C	D
LNVA MDA	960-1 491 (500-1)		960-1 491 (500-1 3/8)	960-1 491 (500-1 1/2)
CIRCLING	1000-1 525 (600-1)		1000-1 525 (600-1 1/2)	1040-2 565 (600-2)

ELEV 475 **D** TDZE 469

MIRL Rwy 6-24 **0**  
 HIRL Rwy 15-33 **0**  
 REIL Rwy 15 and 33 **0**  
 REIL Rwy 6 and 24 **0**