

APP CRS 355°	Rwy Idg TDZE Apt Elev	5001 42 42
------------------------	-----------------------------	---------------------------------------

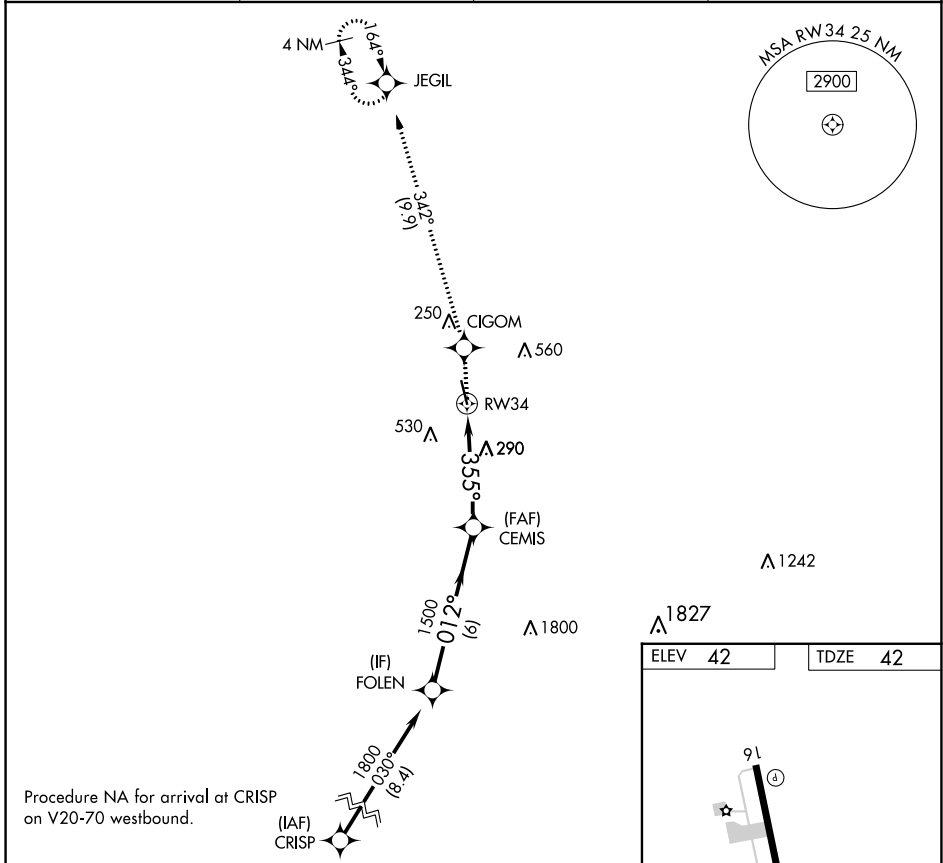
RNAV (GPS) RWY 34

EUNICE (4R7)

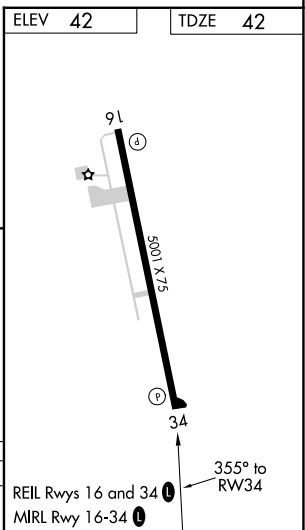
RNP APCH.
 Procedure NA at night. Rwy 34 helicopter visibility reduction below 1 SM NA. Use Lafayette Rgnl/Paul Fournet Fld altimeter setting.

MISSED APPROACH: Climb to 1700 direct CIGOM and on 342° track to JEGIL and hold.

LFT ASOS 134.05	LAFAYETTE APP CON ★ 128.7 268.7	GCO 135.075	UNICOM 122.8 (CTAF) 0
---------------------------	---	-----------------------	---------------------------------



1700	CIGOM	JEGIL	Visual Segment - Obstacles.		FOLEN
↑	☼	342° tr ☼	CEMIS		1800
			RW34	355°	1500
				012°	1800
			4.4 NM	6 NM	
CATEGORY	A	B	C	D	
LNAV MDA	660-1	618 (700-1)	660-1¾ 618 (700-1¾)	NA	



SC-4, 07 SEP 2023 to 05 OCT 2023

SC-4, 07 SEP 2023 to 05 OCT 2023