

WAAS CH 77828 W19A	APP CRS 191°	Rwy Idg TDZE 49 Apt Elev 49	3496
--	------------------------	---	-------------

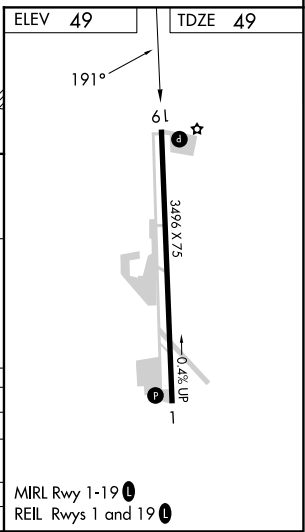
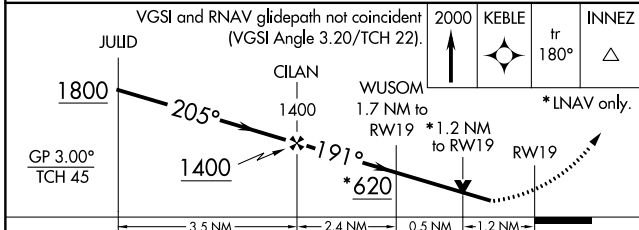
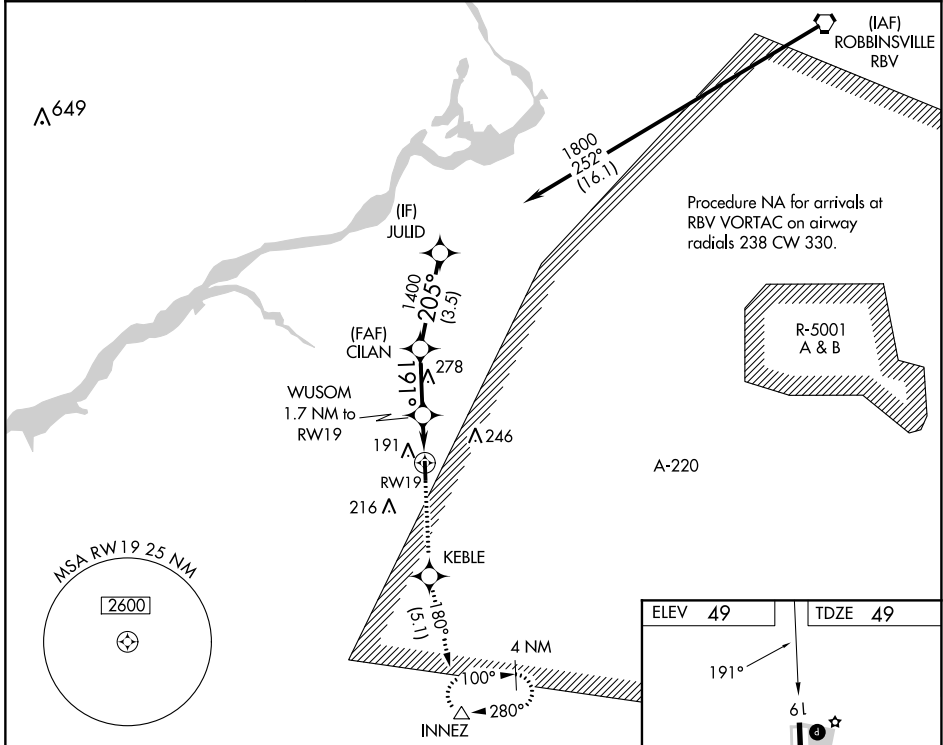
RNAV (GPS) RWY 19

FLYING W (N14)

▽ Baro-VNAV NA when using Northeast Philadelphia altimeter setting. For uncompensated Baro-VNAV systems, LNAV/VNAV NA below -15°C (5°F) or above 54°C (130°F).
△ NA DME/DME RNP-0.3 NA. VDP NA with Northeast Philadelphia altimeter setting. Use Mount Holly altimeter setting, when not received use Northeast Philadelphia altimeter setting and increase all DA/MDA 40 feet and increase LPV and LNAV/VNAV all Cats visibility 1/8 mile. Circling Rwy 1 NA at night. Rwy 1 helicopter visibility reduction below 1 SM NA. Rwy 19 helicopter visibility reduction below 3/4 SM NA.

MISSED APPROACH:
 Climb to 2000 direct KEBLE and on track 180° to INNEZ and hold.

VAY ASOS 119.325	MC GUIRE APP CON 126.475 363.8	UNICOM 122.8 (CTAF)
----------------------------	--	-------------------------------



CATEGORY	A	B	C	D
LPV DA	415-1 1/4	366 (400-1 1/4)		NA
LNAV/VNAV DA	353-1	304 (400-1)		NA
LNAV MDA	460-1	411 (500-1)		NA
CIRCLING	520-1	471 (500-1)		NA

NE-2, 07 SEP 2023 to 05 OCT 2023

NE-2, 07 SEP 2023 to 05 OCT 2023