

VOR/DME MVE 111.6 Chan 53	APP CRS 130°	Rwy Idg TDZE 3999 1034 Apt Elev 1034
--	------------------------	--

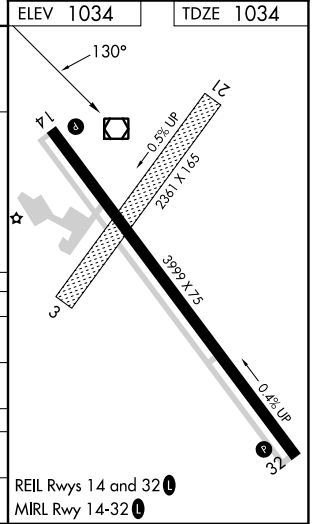
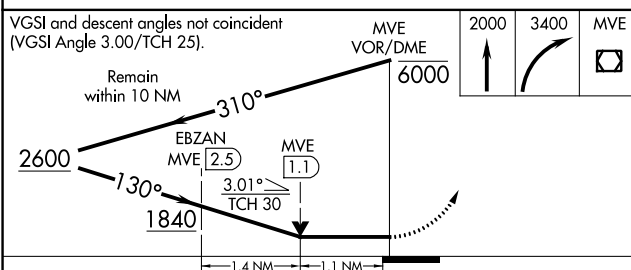
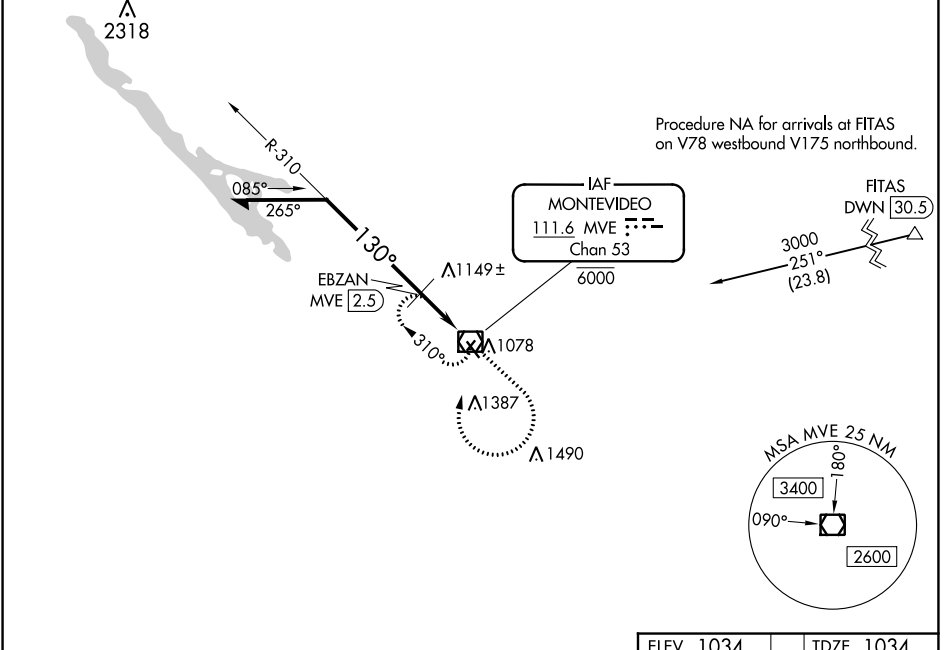
VOR RWY 14

MONTEVIDEO-CHIPPEWA COUNTY (MVE)

NA Circling NA to Rwys 3 and 21.
Rwy 14 helicopter visibility reduction below 3/4 SM NA.

MISSED APPROACH: Climb to 2000 then climbing right turn to 3400 direct MVE VOR/DME and hold, continue climb-in-hold to 3400.

AWOS-3PT 119.675	MINNEAPOLIS CENTER 125.5 323.1	UNICOM 122.8 (CTAF)
----------------------------	--	-------------------------------



CATEGORY	A	B	C	D
S-14	1840-1 806 (900-1)	1840-1¼ 806 (900-1¼)	1840-2½	806 (900-2½)
CIRCLING	1840-1 806 (900-1)	1840-1¼ 806 (900-1¼)	1840-2½	806 (900-2½)
EBZAN FIX MINIMUMS				
S-14	1400-1		366 (400-1)	
CIRCLING	1560-1	526 (600-1)	1700-1¾ 666 (700-1¾)	1700-2 666 (700-2)

REIL Rwys 14 and 32

MRL Rwy 14-32

NC-1, 07 SEP 2023 to 05 OCT 2023

NC-1, 07 SEP 2023 to 05 OCT 2023