


WAAS CH <b>56213</b> <b>W24A</b>	APP CRS <b>244°</b>	Rwy ldg TDZE Apt Elev	<b>5130</b> <b>817</b> <b>823</b>
--	------------------------	-----------------------------	---

# RNAV (GPS) RWY 24

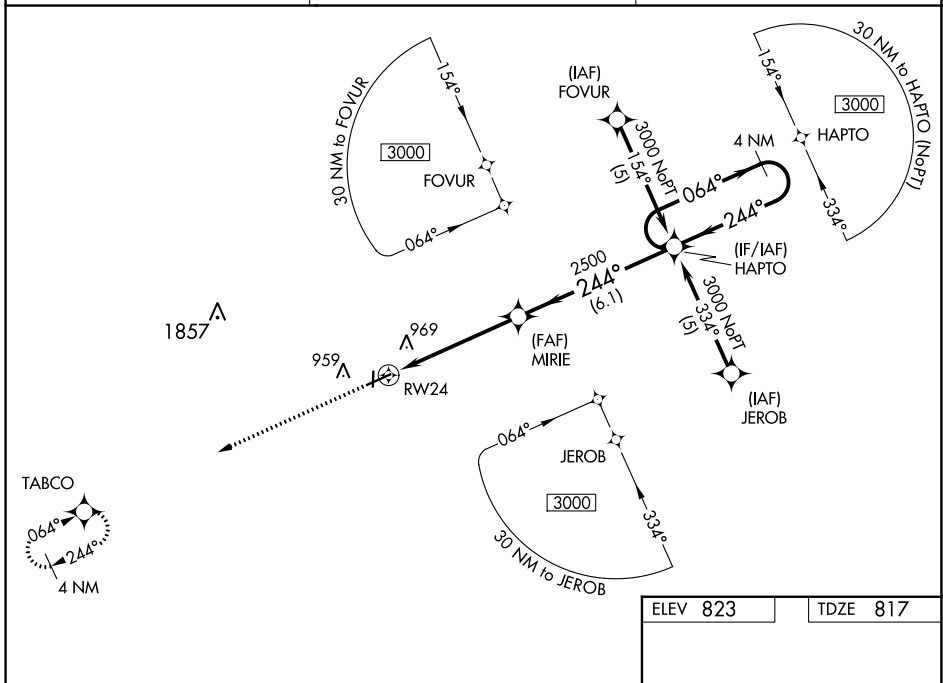
MEXICO MEML (MYJ)

**NA** Helicopter visibility reduction below  $\frac{3}{4}$  SM NA. Inoperative table does not apply. DME/DME RNP-0.3 NA. For uncompensated Baro-VNAV systems, LNAV/VNAV NA below -16°C (4°F) or above 54°C (130°F). When local altimeter setting not received, use Columbia Rgnl altimeter setting; increase LPV DA to 1200 feet; increase LNAV/VNAV DA to 1352 feet; increase all MDAs 80 feet and Circling visibility Cat C  $\frac{1}{2}$  SM. Baro-VNAV NA when using Columbia Rgnl altimeter setting.

**MALS** 

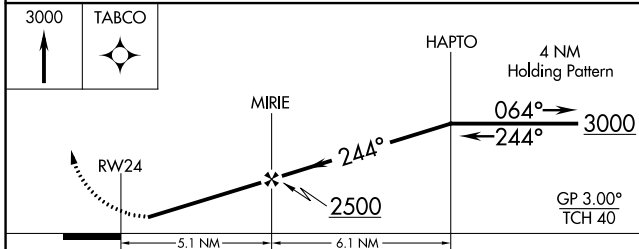
**MISSED APPROACH:** Climb to 3000 direct TABCO and hold.

AWOS-3PT <b>120.575</b>	MIZZU APP CON <b>124.375</b>	CTAF <b>122.9</b>
----------------------------	---------------------------------	----------------------



NC-3, 07 SEP 2023 to 05 OCT 2023

NC-3, 07 SEP 2023 to 05 OCT 2023



CATEGORY	A	B	C	D
LPV DA	1126-1	309 (400-1)		NA
LNAV/VNAV DA	1278-1 $\frac{3}{4}$	461 (500-1 $\frac{3}{4}$ )		NA
LNAV MDA	1220-1	403 (400-1)	1220-1 $\frac{1}{4}$ 403 (400-1 $\frac{1}{4}$ )	NA
CIRCLING	1280-1	457 (500-1)	1420-1 $\frac{1}{2}$ 597 (600-1 $\frac{1}{2}$ )	NA

ELEV 823	TDZE 817
----------	----------

Obstacle diagram showing REIL Rwy 18 (81 ft) and MRL Rwy 6-24 and 18-36 (36 ft). The diagram also indicates a 3200 x 50 ft obstacle and a 5501 x 100 ft obstacle.