

APP CRS	Rwy Idg	<b>3180</b>
<b>269°</b>	TDZE	<b>9</b>
	Apt Elev	<b>9</b>

# RNAV (GPS) RWY 28R

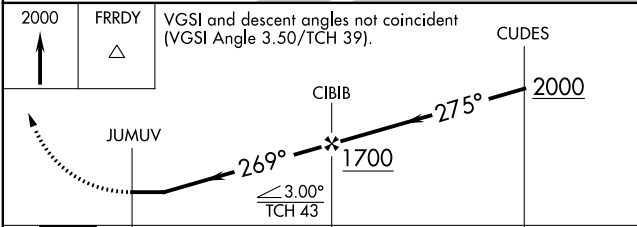
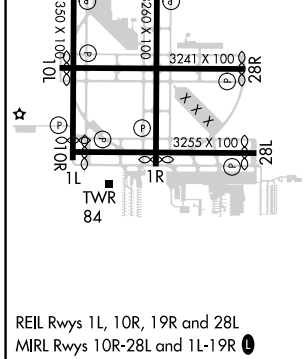
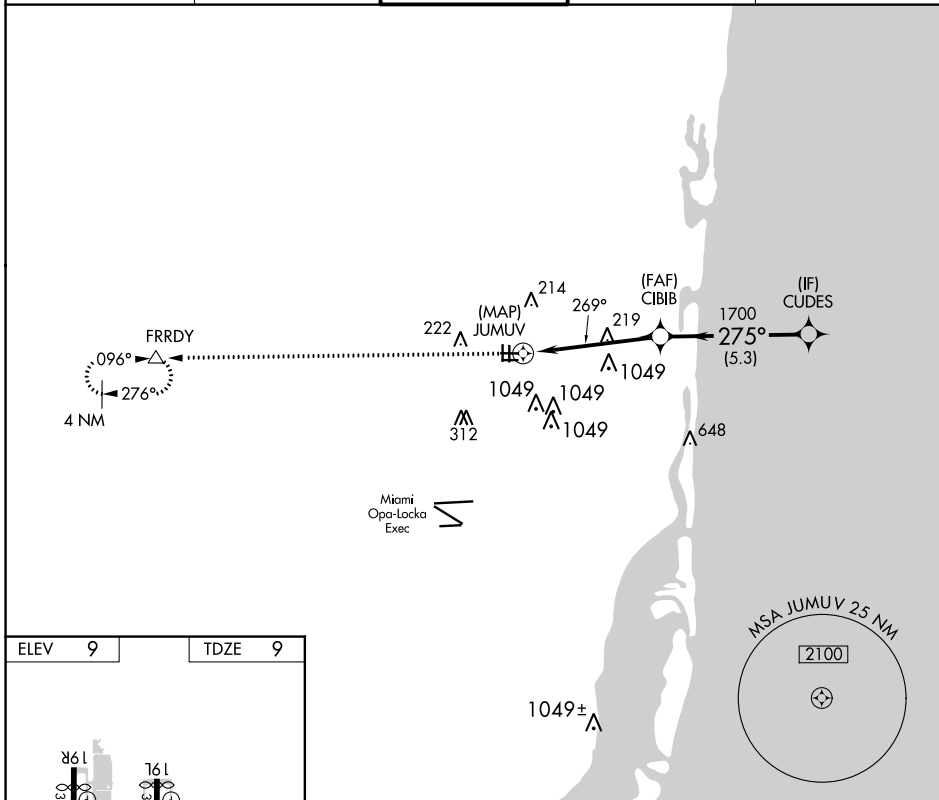
NORTH PERRY (HWO)

RNP APCH. RADAR required for procedure entry.

**▼** Rwy 28R helicopter visibility reduction below 3/4 SM NA. Straight-in minimums NA at night. Circling Rwy 1R, 10L, 19L, 28R NA at night. Circling NA for Cat C south of Rwy 10R-28L.

MISSED APPROACH: Climb to 2000 direct FRRDY and hold.

ATIS <b>135.475</b>	MIAMI APP CON <b>128.6 306.975</b>	<b>NORTH PERRY TOWER*</b> <b>132.1 (CTAF) 0 254.3</b>	GND CON <b>120.45 254.3</b>	UNICOM <b>122.95</b>
------------------------	---------------------------------------	--	--------------------------------	-------------------------



CATEGORY	A	B	C	D
LNAV MDA	520-1 511 (600-1)		520-1 3/8 511 (600-1 3/8)	NA
CIRCLING	560-1 551 (600-1)		560-1 1/2 551 (600-1 1/2)	NA

SE-3, 07 SEP 2023 to 05 OCT 2023

SE-3, 07 SEP 2023 to 05 OCT 2023