

WAAS CH <b>48809</b> <b>W29A</b>	APP CRS <b>288°</b>	Rwy Idg TDZE Apt Elev	<b>5001</b> <b>790</b> <b>790</b>
--	------------------------	-----------------------------	---

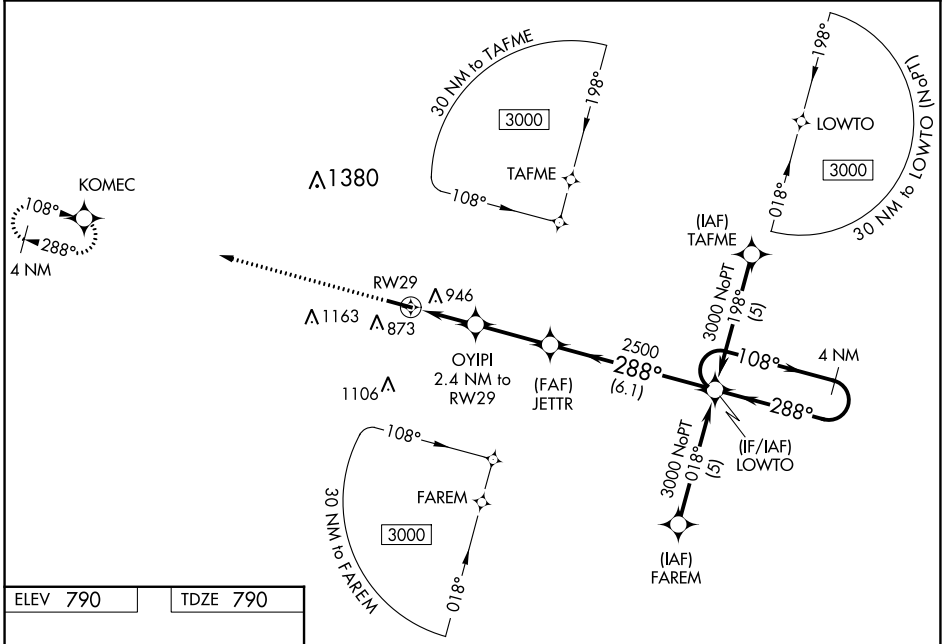
# RNAV (GPS) RWY 29

FULTON COUNTY (R.C.R.)

**⚠** DME/DME RNP-0.3 NA. Visibility reduction by helicopters NA. For uncompensated Baro-VNAV systems, LNAV/VNAV NA below -16°C (4°F) or above 47°C (116°F).  
**⚠** When local altimeter setting not received, use Goshen altimeter setting: increase LPV DA to 1208 feet and visibility all Cats ½ SM; increase LNAV/VNAV DA to 1325 and visibility all Cats ½ SM; increase all MDA 100 feet and visibility LNAV Cats C and D and Circling Cats C and D ¼ SM. Baro-VNAV and VDP NA when using Goshen altimeter setting.

MISSED APPROACH: Climb to 3000 direct KOMEC and hold.

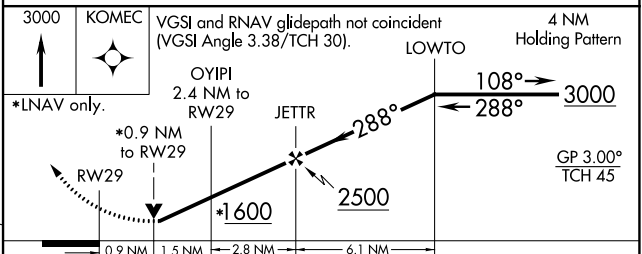
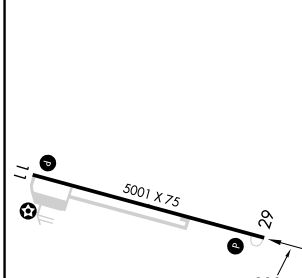
AWOS-3 <b>118.775</b>	SOUTH BEND APP CON* <b>132.05 257.8</b>	UNICOM <b>122.7 (CTAF) 0</b>
--------------------------	--	---------------------------------



EC-2, 07 SEP 2023 to 05 OCT 2023

EC-2, 07 SEP 2023 to 05 OCT 2023

ELEV 790	TDZE 790
----------	----------



CATEGORY	A	B	C	D
LPV DA		1127-1¼	337 (400- 1¼)	
LNAV/VNAV DA		1244-1½	454 (500- 1½)	
LNAV MDA	1200-1	410 (500-1)	1200-1¼	410 (500-1¼)
CIRCLING	1280-1 490 (500-1)	1360-1 570 (600-1)	1480-2 690 (700-2)	1620-2¾ 830 (900-2¾)

REIL Rwy 11 and 29 **0**  
MIRL Rwy 11-29 **0**