

VORTAC CYN <b>113.4</b> Chan <b>81</b>	APP CRS <b>234°</b>	Rwy Idg TDZE Apt Elev	<b>5835</b> <b>81</b> <b>86</b>
--	------------------------	-----------------------------	---------------------------------------

# VOR RWY 24

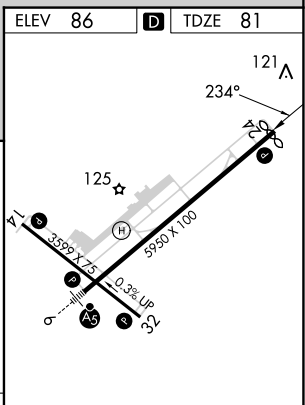
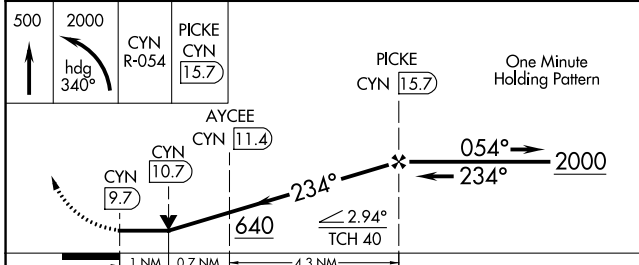
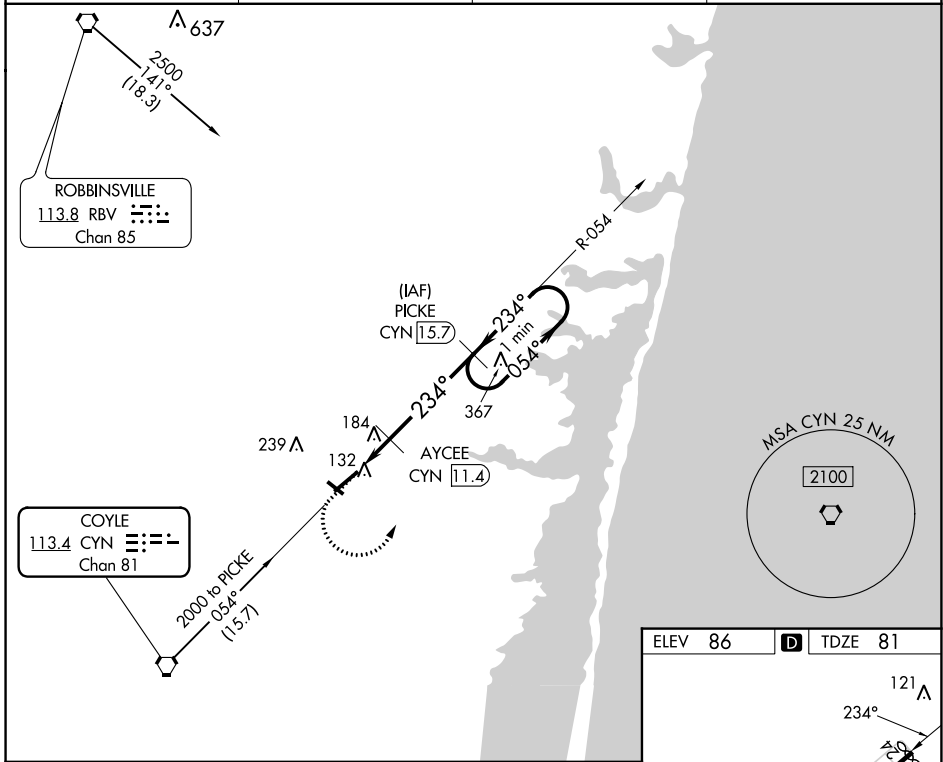
OCEAN COUNTY (MJX)

DME required for procedure entry.  
DME required.

**▼** Rwy 24 helicopter visibility reduction below 3/4 SM NA.  
Circling Rwy 14, 32 NA at night.

MISSED APPROACH: Climb to 500 then climbing left turn to 2000 on heading 340° and on CYN VORTAC R-054 to PICKE/CYN 15.7 DME and hold.

AWOS-3PT <b>119.875</b>	MC GUIRE APP CON <b>126.475 363.8</b>	GCO <b>121.725</b>	UNICOM <b>122.7 (CTAF)</b>
----------------------------	--	-----------------------	-------------------------------



CATEGORY	A	B	C	D
S-24		440-1	359 (400-1)	
<b>C</b> CIRCLING	540-1 454 (500-1)	560-1 474 (500-1)	580-1½ 494 (500-1½)	700-2 614 (700-2)

MIRL Rwy 14-32 **Ⓛ**  
HIRL Rwy 6-24 **Ⓛ**  
REIL Rws 14, 24 and 32 **Ⓛ**

NE-2, 07 SEP 2023 to 05 OCT 2023

NE-2, 07 SEP 2023 to 05 OCT 2023