

WAAS CH <b>82540</b> <b>W21A</b>	APP CRS <b>211°</b>	Rwy Idg TDZE Apt Elev	<b>5020</b> <b>255</b> <b>268</b>
--	------------------------	-----------------------------	---

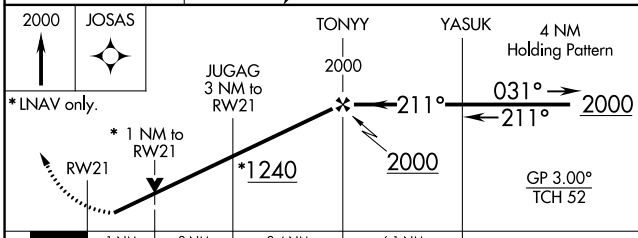
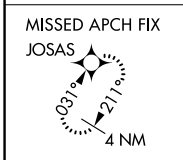
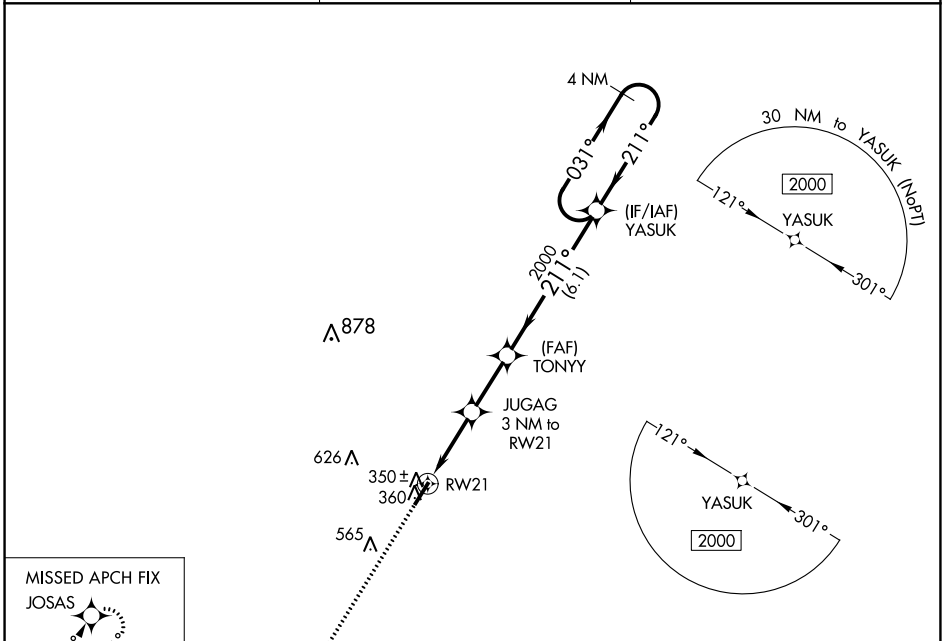
# RNAV (GPS) RWY 21

MONTICELLO MUNI/ELLIS FLD (L.L.Q.)

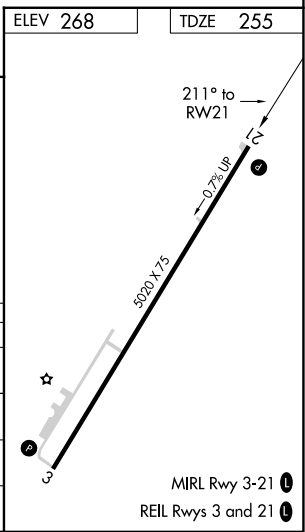
RNP APCH. MISSED APPROACH: Climb to 2000 direct JOSAS and hold.

▼ For uncompensated Baro-VNAV systems, LNAV/VNAV NA below -7°C (20°F) or above 54°C (130°F). Rwy 21 helicopter visibility reduction below ¼ SM NA.

ASOS <b>133.325</b>	MEMPHIS CENTER <b>135.875 269.35</b>	UNICOM <b>122.8 (CTAF)</b>
------------------------	---	-------------------------------



CATEGORY	A	B	C	D
LPV DA		514-7/8	259 (300-7/8)	
LNAV/VNAV DA		532-1	277 (300-1)	
LNAV MDA		600-1	345 (400-1)	
CIRCLING	780-1	512 (600-1)	980-2 712 (800-2)	980-2 1/4 712 (800-2 1/4)



SC-1, 07 SEP 2023 to 05 OCT 2023

SC-1, 07 SEP 2023 to 05 OCT 2023