

VOR/DME CZI <b>117.3</b> Chan <b>120</b>	APP CRS <b>319°</b>	Rwy ldg <b>6143</b> TDZE <b>4940</b> Apt Elev <b>4970</b>
--	------------------------	---

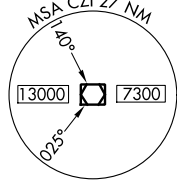
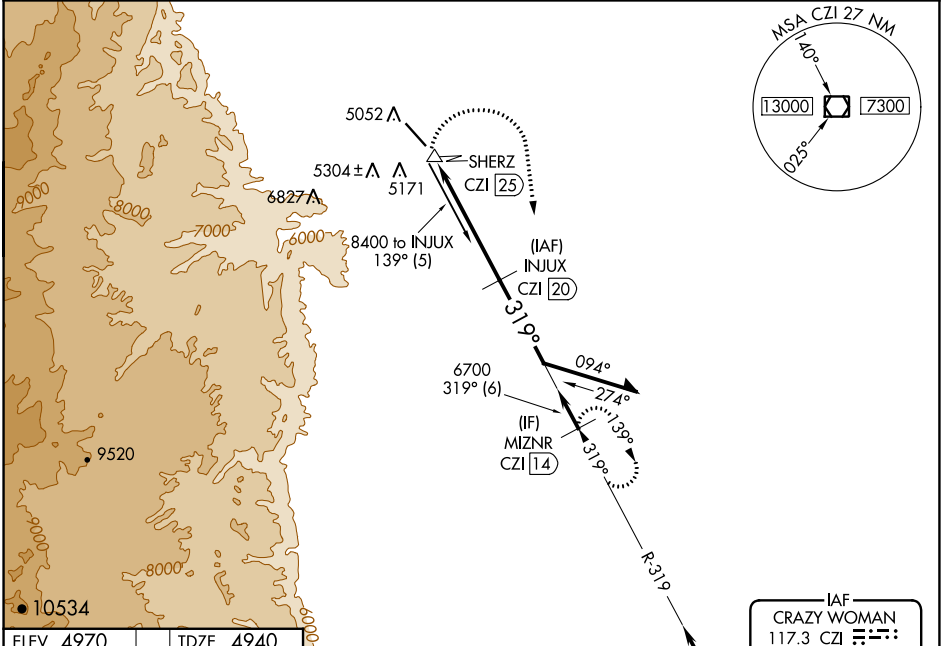
# VOR/DME RWY 31

JOHNSON COUNTY (BYG)

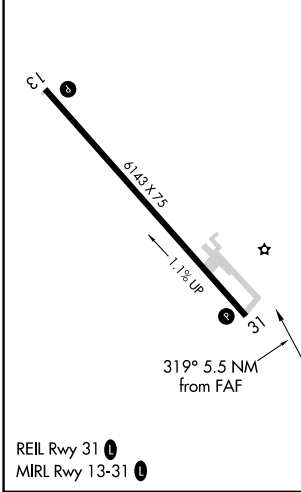
**⚠** Visibility reduction by helicopters NA. If local altimeter setting not received, use Sheridan altimeter setting and increase all MDAs 600 feet. When VGSI inoperative, procedure NA at night. Circling NA southwest of Rwy 13-31.

MISSED APPROACH: Climbing right turn to 7600 via heading 160° and CZI VOR/DME R-319 to MIZNR/14 DME and hold.

ASOS <b>135.425</b>	SALT LAKE CENTER <b>127.75 351.9</b>	UNICOM <b>122.8 (CTAF)</b>
------------------------	---	-------------------------------



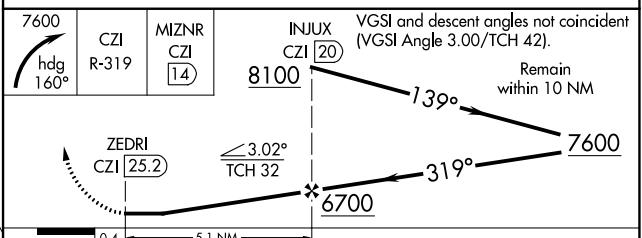
ELEV 4970	TDZE 4940
-----------	-----------



REIL Rwy 31  
MIRL Rwy 13-31

Procedure NA for arrivals at CZI VOR/DME via V247 southbound.

IAF CRAZY WOMAN  
117.3 CZI  
Chan 120



CATEGORY	A	B	C	D
S-31	5680-1 740 (800-1)	5680-1¼ 740 (800-1¼)	5680-2¼ 740 (800-2¼)	5680-2½ 740 (800-2½)
<b>C</b> CIRCLING	5680-1 710 (800-1)	5680-1¼ 710 (800-1¼)	5680-2¼ 710 (800-2¼)	5680-2½ 710 (800-2½)

NW-1, 07 SEP 2023 to 05 OCT 2023

NW-1, 07 SEP 2023 to 05 OCT 2023