

APP CRS	Rwy Idg	5005
058°	TDZE	9
	Apt Elev	9

RNAV (GPS) RWY 6

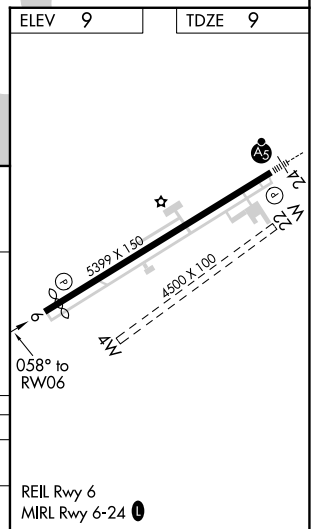
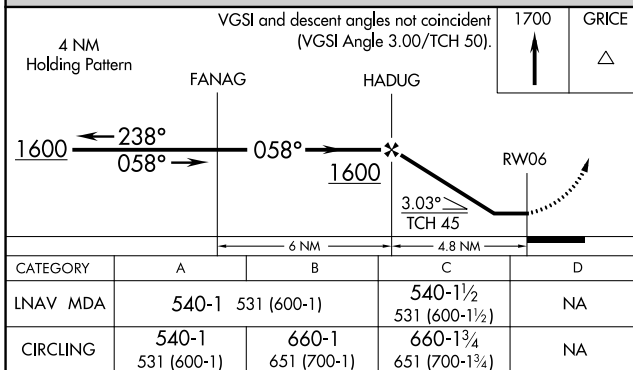
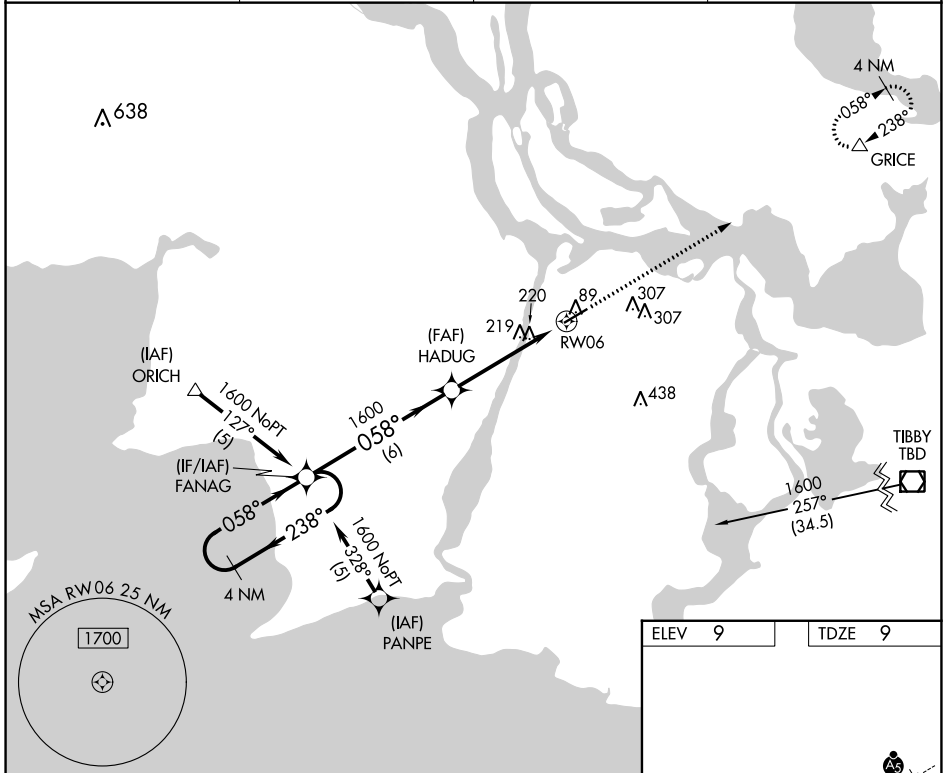
HARRY P WILLIAMS MEML (PTN)

RNP APCH.

▽ Circling NA to Rwy 4W and 22W. Rwy 6 helicopter visibility reduction below 1 SM NA.
▲ When local altimeter setting not received, use New Iberia altimeter setting and increase all MDA 100 feet; increase LNAV Cat C visibility ¼ SM and Circling Cat C visibility ½ SM.
 When VGSI inop, Straight-in/Circling Rwy 6 procedure NA at night.

MISSED APPROACH: Climb to 1700 direct GRICE and hold.

AWOS-3PT 134.575	NEW ORLEANS APP CON 124.3 350.35	CLNC DEL 124.3	UNICOM 122.8 (CTAF) 0
----------------------------	--	--------------------------	---------------------------------



SC-4, 07 SEP 2023 to 05 OCT 2023

SC-4, 07 SEP 2023 to 05 OCT 2023