

LOC/DME I-RBW <b>110.15</b> Chan <b>38 (Y)</b>	APP CRS <b>229°</b>	Rwy Idg <b>6002</b> TDZE <b>101</b> Apt Elev <b>101</b>
--	------------------------	---

# ILS Y or LOC Y RWY 23

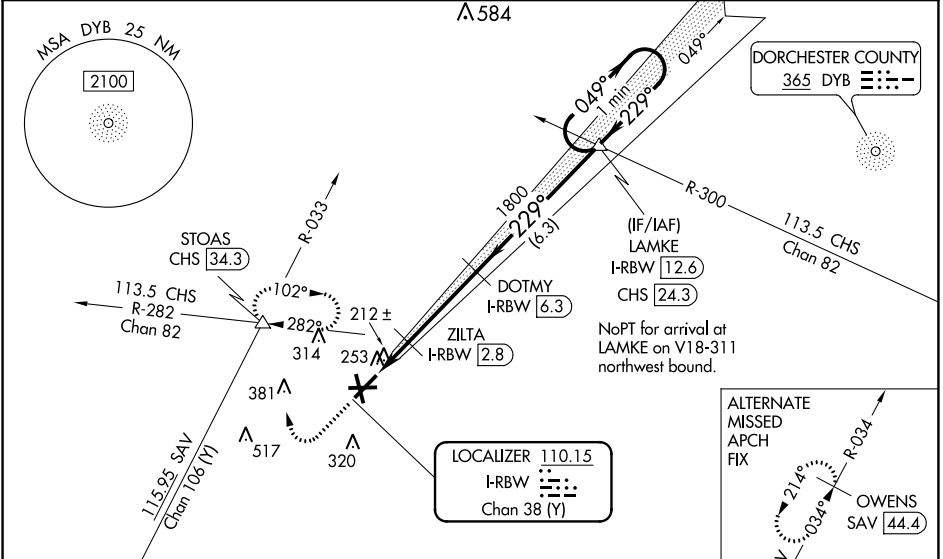
LOWCOUNTRY RGNL (R.BW)

**▽** Inop table does not apply to S-LOC 23 Cat C. DME required. Helicopter visibility reduction below 3/4 SM NA. VDP NA with Charleston AFB/Intl altimeter setting. When local altimeter setting not received, use Charleston AFB/Intl altimeter setting: increase S-ILS 23 DA to 379 feet and all MDA 80 feet; increase S-LOC 23 Cats C/D visibility 1/8 mile and Circling Cat C visibility 1/2 mile and Circling Cat D visibility 1/4 mile. For inop ODALS when using Charleston AFB/Intl altimeter setting, increase S-ILS 23 all Cats visibility to 7/8 mile and S-LOC 23 Cat D visibility to 1 1/8 mile.

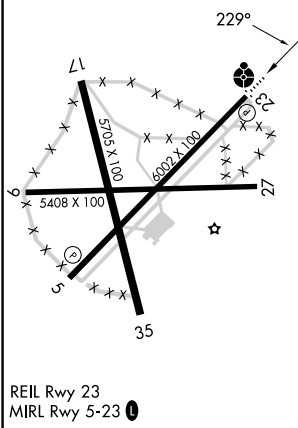
**△ NA**

**ODALS** MISSED APPROACH: Climb to 700 then climbing right turn to 2000 on heading 360° and CHS VORTAC R-282 to STOAS/CHS VORTAC 34.3 DME and hold, continue climb-in-hold to 2000.

AWOS-3 <b>118.725</b>	CHARLESTON APP CON <b>120.7 306.925</b>	UNICOM <b>122.8 (CTAF)</b>
--------------------------	--	-------------------------------



ELEV 101	TDZE 101
----------	----------



700	2000	STOAS	VGSI and ILS glidepath not coincident (VGSI Angle 3.00/TCH 46).
↑	hdg 360°	△	
*LOC only.			
ZILTA I-RBW [2.8]		1800	DOTMY I-RBW [6.3]
I-RBW [1.1]		*I-RBW [2.2]	LAMKE I-RBW [12.6]
1800		229°	049°
680*		1800	2100
1 NM 0.7 3.5 NM 6.3 NM			GS 3.00° TCH 43

CATEGORY	A	B	C	D
S-ILS 23	301-3/4 200 (200-3/4)			
S-LOC 23	480-3/4 379 (400-3/4)		480-1 379 (400-1)	
<b>C</b> CIRCLING	620-1 519 (600-1)	640-1 539 (600-1)	700-1 1/2 599 (600-1 1/2)	700-2 599 (600-2)

SE-2, 07 SEP 2023 to 05 OCT 2023

SE-2, 07 SEP 2023 to 05 OCT 2023