

LOC/DME I-RBW 110.15 Chan 38 (Y)	APP CRS 229°	Rwy Idg 6002 TDZE 101 Apt Elev 101
--	------------------------	---

ILS Z or LOC Z RWY 23

LOWCOUNTRY RGNL (R.BW)

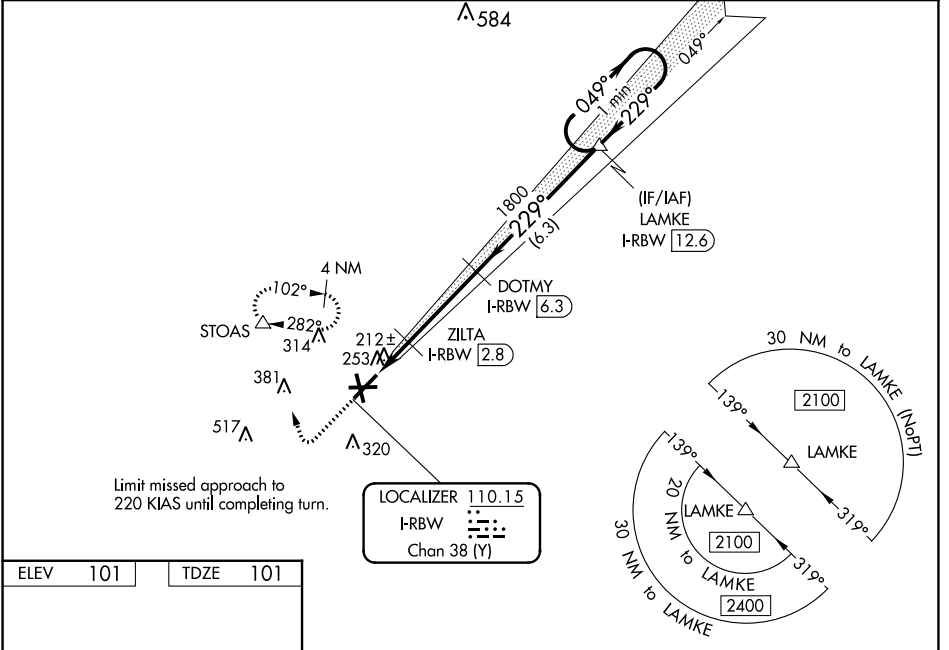
▽ Inop table does not apply to S-LOC 23 Cat C. GPS and DME required. Helicopter visibility reduction below 3/4 SM NA. VDP NA with Charleston AFB/Intl altimeter setting. When local altimeter setting not received, use Charleston AFB/Intl altimeter setting: increase S-ILS 23 DA to 379 feet and all MDA 80 feet; increase S-LOC 23 Cats C/D visibility 1/8 mile and Circling Cat C visibility 1/2 mile and Circling Cat D visibility 1/4 mile. For inop ODALS when using Charleston AFB/Intl altimeter setting, increase S-ILS 23 all Cats visibility to 1/8 mile and S-LOC 23 Cat D visibility to 1 1/8 mile.

△ NA

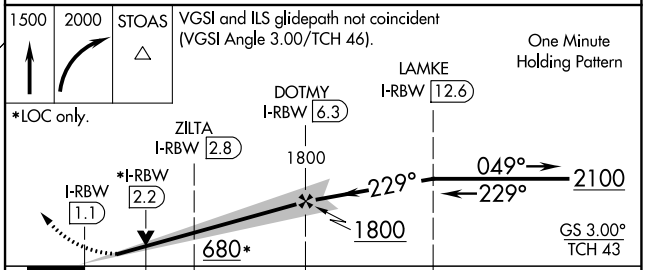
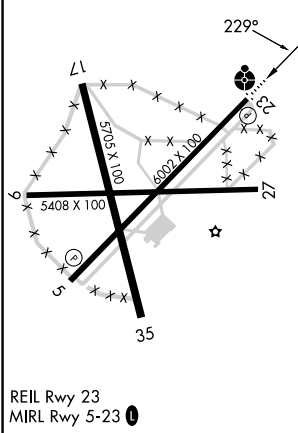
ODALS

MISSED APPROACH: Climb to 1500 then climbing right turn to 2000 direct STOAS and hold.

AWOS-3 118.725	CHARLESTON APP CON 120.7 306.925	UNICOM 122.8 (CTAF) 0
--------------------------	--	--



ELEV 101	TDZE 101
-----------------	-----------------



CATEGORY	A	B	C	D
S-ILS 23	301-3/4 200 (200-3/4)			
S-LOC 23	480-3/4 379 (400-3/4)	480-1 379 (400-1)		
C CIRCLING	620-1 519 (600-1)	640-1 539 (600-1)	700-1 1/2 599 (600-1 1/2)	700-2 599 (600-2)

SE-2, 07 SEP 2023 to 05 OCT 2023

SE-2, 07 SEP 2023 to 05 OCT 2023