


WAAS CH 61016 W23A	APP CRS 229°	Rwy ldg TDZE Apt Elev	6002 101 101
--	------------------------	-----------------------------	---

RNAV (GPS) RWY 23

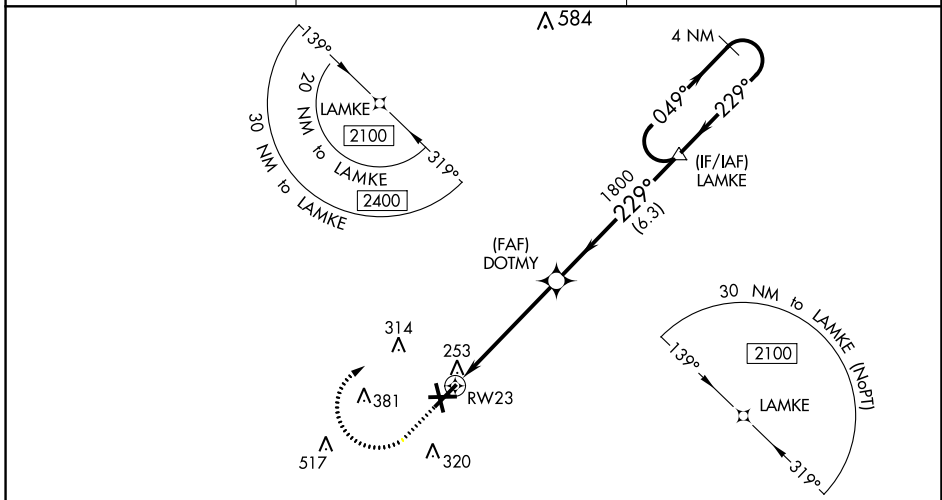
LOWCOUNTRY RGNL (R.BW)

⚠ For uncompensated Baro-VNAV systems, LNAV/VNAV NA below -15°C (5°F) or above 54°C (130°F). Baro-VNAV and VDP NA when using Charleston AFB/Intl altimeter setting. DME/DME RNP-0.3 NA. Helicopter visibility reduction below ¼ SM NA. For inop ODALS, increase LNAV/VNAV all Cats visibility to 1¼ mile and LNAV Cat D visibility to 1½ mile. When local altimeter setting not received, use Charleston AFB/Intl altimeter setting; increase LPV DA to 379 feet and LNAV/VNAV DA to 542 feet and all MDA 80 feet; increase LNAV/VNAV visibility all Cats, LNAV Cats C/D visibility, and Circling Cat D visibility ¼ mile; increase Circling Cat C visibility ½ mile. For inop ODALS when using Charleston AFB/Intl altimeter setting, increase LPV all Cats visibility to ¾ mile and LNAV/VNAV all Cats and LNAV Cats C/D visibility to 1½ mile.

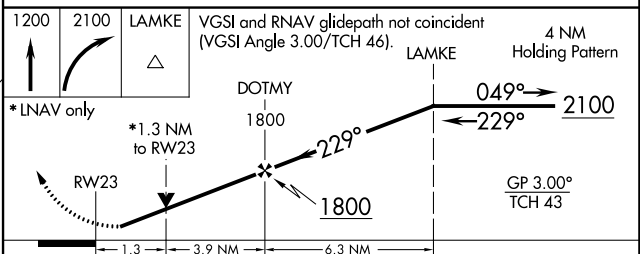
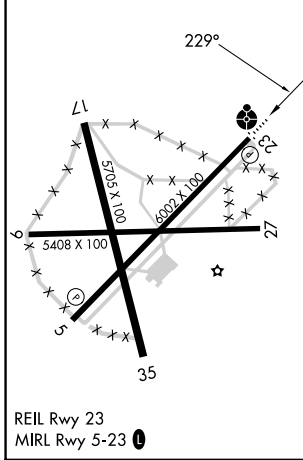
ODALS 


MISSED APPROACH: Climb to 1200 then climbing right turn to 2100 direct LAMKE and hold.

AWOS-3 118.725	CHARLESTON APP CON 120.7 306.925	UNICOM 122.8 (CTAF) 
--------------------------	--	---



ELEV	101	TDZE	101
------	-----	------	-----



CATEGORY	A	B	C	D
LPV DA		301-¾	200 (200-¾)	
LNAV/VNAV DA		464-1½	363 (400-1½)	
LNAV MDA	560-¾	459 (500-¾)	560-1½	459 (500-1½)
 CIRCLING	620-1 519 (600-1)	640-1 539 (600-1)	700-1½ 599 (600-1½)	700-2 599 (600-2)

SE-2, 07 SEP 2023 to 05 OCT 2023

SE-2, 07 SEP 2023 to 05 OCT 2023