

WAAS CH <b>48916</b> <b>W35A</b>	APP CRS <b>351°</b>	Rwy Idg TDZE Apt Elev	<b>5705</b> <b>95</b> <b>101</b>
--	------------------------	-----------------------------	--

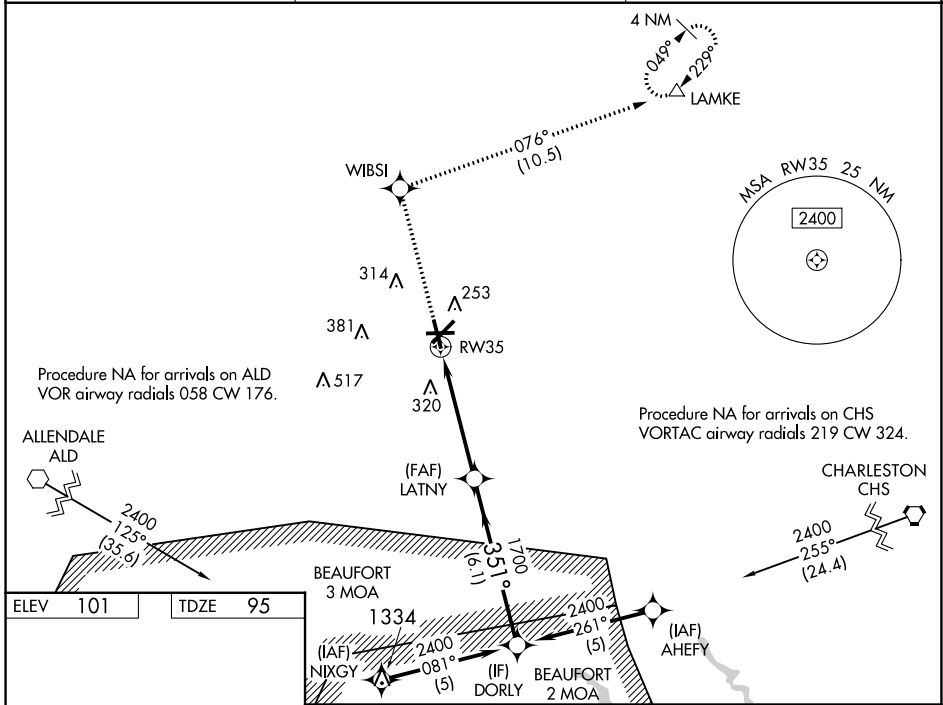
# RNAV (GPS) RWY 35

LOWCOUNTRY RGNL (R.B.W)

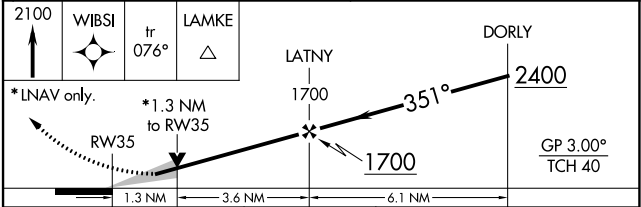
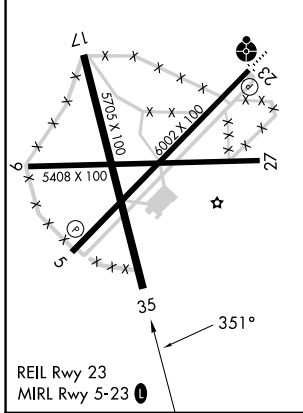
**⚠** For uncompensated Baro-VNAV systems, LNAV/VNAV NA below -15°C (5°F) or above 54°C (130°F). Baro-VNAV and VDP NA when using Charleston AFB/Intl altimeter setting.  
**⚠** DME/DME RNP-0.3 NA. When local altimeter setting not received, use Charleston AFB/Intl altimeter setting: increase LPV DA to 476 feet and LNAV/VNAV DA to 525 feet and all MDA 80 feet; increase LPV visibility all Cats, LNAV/VNAV visibility all Cats, LNAV Cats C/D visibility, and Circling Cat D visibility ¼ mile; increase Circling Cat C visibility ½ mile.

**MISSED APPROACH:**  
 Climb to 2100 direct WIBSI and on track 076° to LAMKE and hold.

AWOS-3 <b>118.725</b>	CHARLESTON APP CON <b>120.7 306.925</b>	UNICOM <b>122.8 (CTAF) 0</b>
--------------------------	--	---------------------------------



ELEV 101	TDZE 95
----------	---------



CATEGORY	A	B	C	D
LPV DA	398-1 303 (300-1)			
LNAV/VNAV DA	447-1¼ 352 (400-1¼)			
LNAV MDA	560-1 465 (500-1)	560-1¾ 465 (500-1¾)		
<input checked="" type="checkbox"/> CIRCLING	620-1 519 (600-1)	640-1 539 (600-1)	700-1½ 599 (600-1½)	700-2 599 (600-2)

SE-2, 07 SEP 2023 to 05 OCT 2023

SE-2, 07 SEP 2023 to 05 OCT 2023