

WAAS CH <b>53739</b> <b>W21A</b>	APP CRS <b>210°</b>	Rwy Idg TDZE Apt Elev	<b>5501</b> <b>668</b> <b>671</b>
--	------------------------	-----------------------------	---

# RNAV (GPS) RWY 21

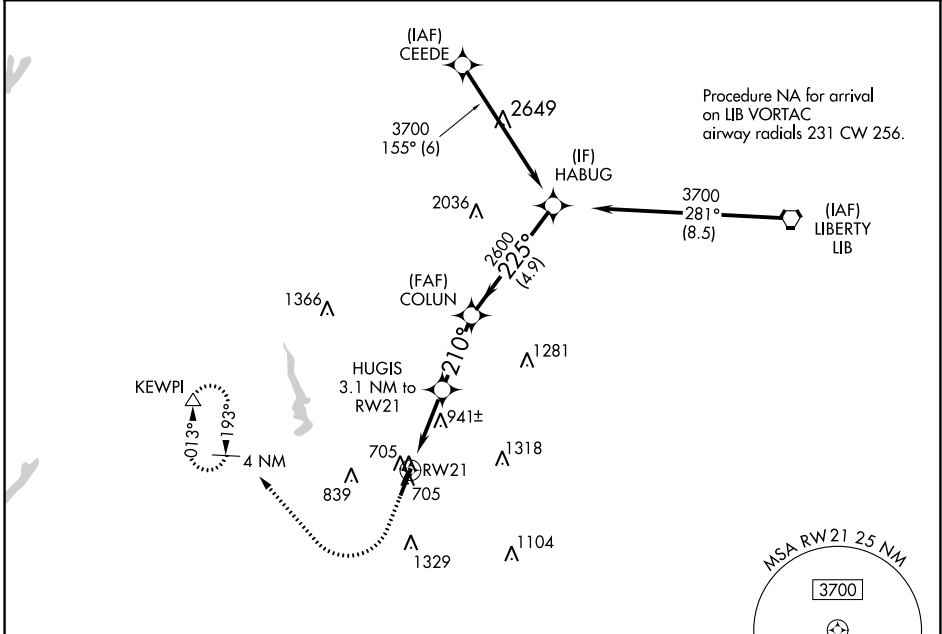
ASHEBORO RGNL (HBI)

RNP APCH-GPS.

**▼** For uncompensated Baro-VNAV systems, LNAV/VNAV NA below -16°C (4°F) or above 54°C (130°F). Rwy 21 helicopter visibility reduction below 3/4 SM NA.

MISSED APPROACH: Climb to 3000 then right turn direct KEWPI and hold.

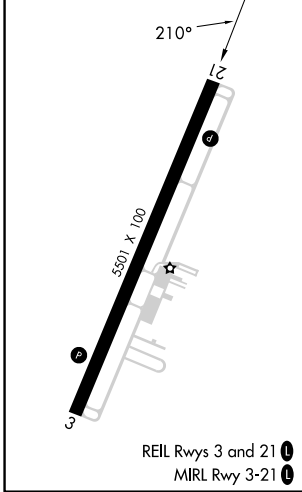
AWOS-3 <b>119.275</b>	GREENSBORO APP CON <b>126.6 327.075</b>	UNICOM <b>122.8 (CTAF) 0</b>
--------------------------	--	---------------------------------



SE-2, 07 SEP 2023 to 05 OCT 2023

SE-2, 07 SEP 2023 to 05 OCT 2023

ELEV 671	TDZE 668
----------	----------



REIL Rwy 3 and 21 **0**  
MIRL Rwy 3-21 **0**

3000	↑	KEWPI	△	HABUG	3700
*LNAV only.					
RW21		HUGIS 3.1 NM to RW21	COLUN 2600	225°	
*1.6 NM to RW21		*1680		2600	
1.6 NM		1.5 NM	2.8 NM	4.9 NM	
CATEGORY	A	B	C	D	
LPV DA		918-3/4	250 (300-3/4)		
LNAV/VNAV DA		1069-1/8	401 (400-1/8)		
LNAV MDA	1220-1	552 (600-1)	1220-15/8	552 (600-15/8)	
<b>CIRCLING</b>	1300-1 629 (700-1)	1360-1 689 (700-1)	1680-3	1009 (1100-3)	