

|  |                        |                             |   |
|--|------------------------|-----------------------------|---|
| WAAS<br>CH <b>90237</b><br><b>W03A</b> | APP CRS<br><b>028°</b> | Rwy ldg<br>TDZE<br>Apt Elev | <b>3701</b><br><b>2595</b><br><b>2595</b> |
|--|------------------------|-----------------------------|---|

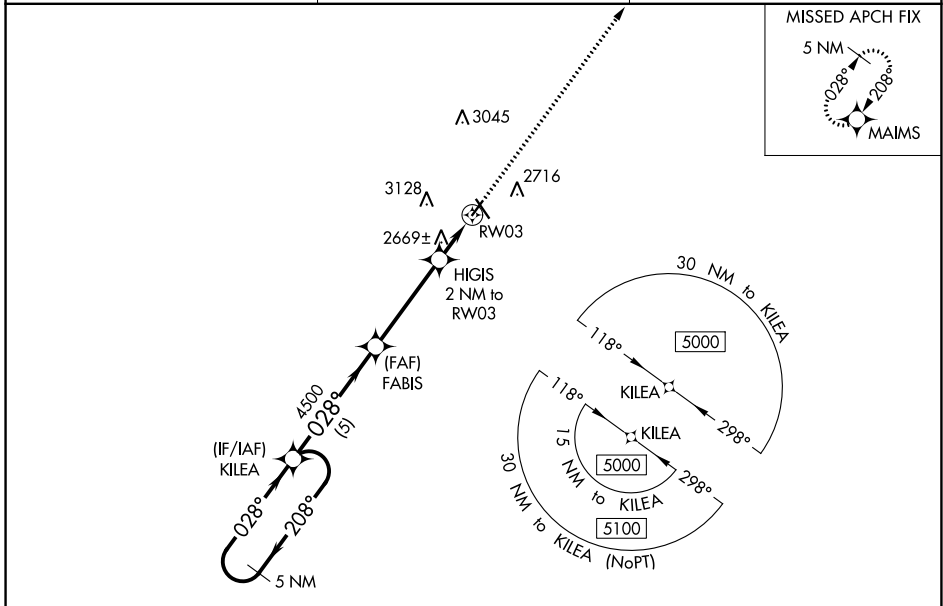
# RNAV (GPS) RWY 3

MILLER FLD (VTN)

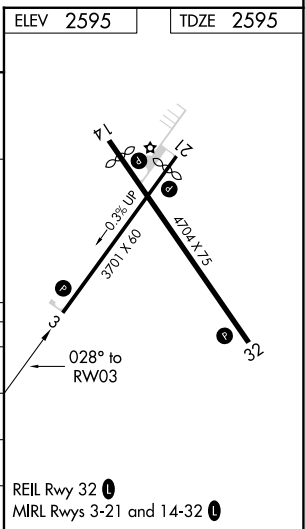
**⚠** Baro-VNAV NA when using Ainsworth Rgnl altimeter setting. For uncompensated Baro-VNAV systems, LNAV/VNAV NA below -25°C (-13°F) or above 54°C (130°F). DME/DME RNP-0.3 NA. VDP NA with Ainsworth Rgnl altimeter setting. When local altimeter setting not received, use Ainsworth Rgnl altimeter setting and increase all DA 70 feet and all MDA 80 feet, increase LNAV/VNAV Cat A/B visibility 1/8 mile.

**MISSED APPROACH:**  
Climb to 5000 direct MAIMS and hold.

|                        |                                      |                                 |
|------------------------|--------------------------------------|---------------------------------|
| ASOS<br><b>118.075</b> | DENVER CENTER<br><b>127.95 338.2</b> | UNICOM<br><b>122.8 (CTAF) 0</b> |
|------------------------|--------------------------------------|---------------------------------|



|                      |                 |
|----------------------|-----------------|
| ELEV 2595            | TDZE 2595       |
| 5000                 | MAIMS           |
| 5 NM Holding Pattern | KILEA           |
| ← 208°               | → 028°          |
| 5000                 | 028°            |
| GP 3.00°             | TCH 39          |
| 4500                 | FABIS           |
| 4500                 | HIGIS           |
| 3260                 | RW03            |
| 5 NM                 | 3.9 NM          |
| 1.2 NM               | 0.8 NM          |
| *LNAV only.          | *0.8 NM to RW03 |
| 0.36 UP              | 3701 X 60       |
| 0.70                 | 4704 X 75       |
| 028° to RW03         |                 |



NC-2, 07 SEP 2023 to 05 OCT 2023

NC-2, 07 SEP 2023 to 05 OCT 2023