

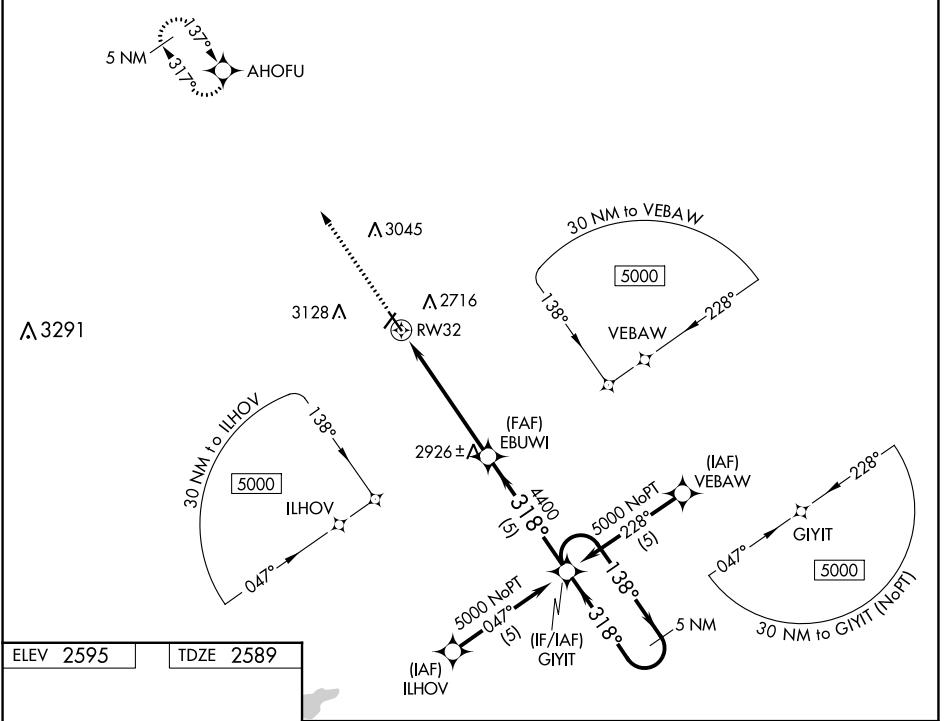
WAAS CH <b>40010</b> W32A	APP CRS <b>318°</b>	Rwy Idg TDZE Apt Elev	<b>4704</b> <b>2589</b> <b>2595</b>
---------------------------------	------------------------	-----------------------------	---

# RNAV (GPS) RWY 32

MILLER FLD (VTN)

RNP APCH.	MISSED APPROACH: Climb to 5000 direct AHOFU and hold.
Baro-VNAV NA below -20°C (-4°F).	

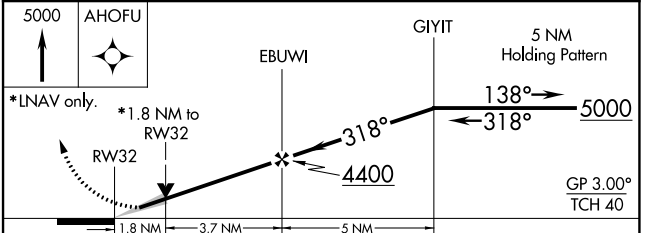
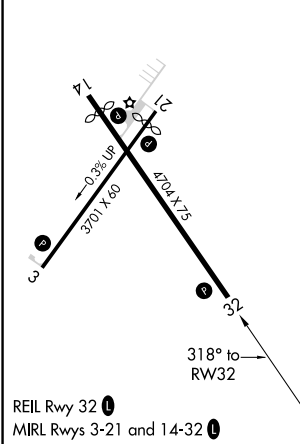
ASOS <b>118.075</b>	DENVER CENTER <b>127.95 338.2</b>	UNICOM <b>122.8 (CTAF) 0</b>
------------------------	--------------------------------------	---------------------------------



NC-2, 07 SEP 2023 to 05 OCT 2023

NC-2, 07 SEP 2023 to 05 OCT 2023

ELEV 2595	TDZE 2589
-----------	-----------



CATEGORY	A	B	C	D
LPV DA	2841-1	252 (300-1)		NA
LNAV/VNAV DA	2961-1¼	372 (400-1¼)		NA
LNAV MDA	3180-1	591 (600-1)		NA
CIRCLING	3180-1¼ 585 (600-1¼)	3560-1½ 965 (1000-1½)		NA