

LOC/DME I-RVT 111.15 Chan 48 (Y)	APP CRS 002°	Rwy Idg 8003 TDZE 261 Apt Elev 264
--	------------------------	---

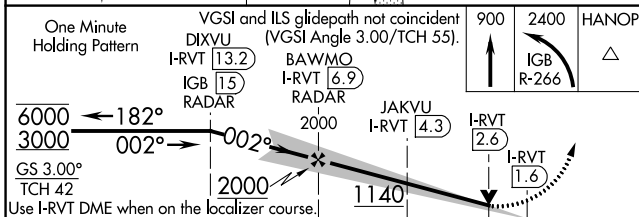
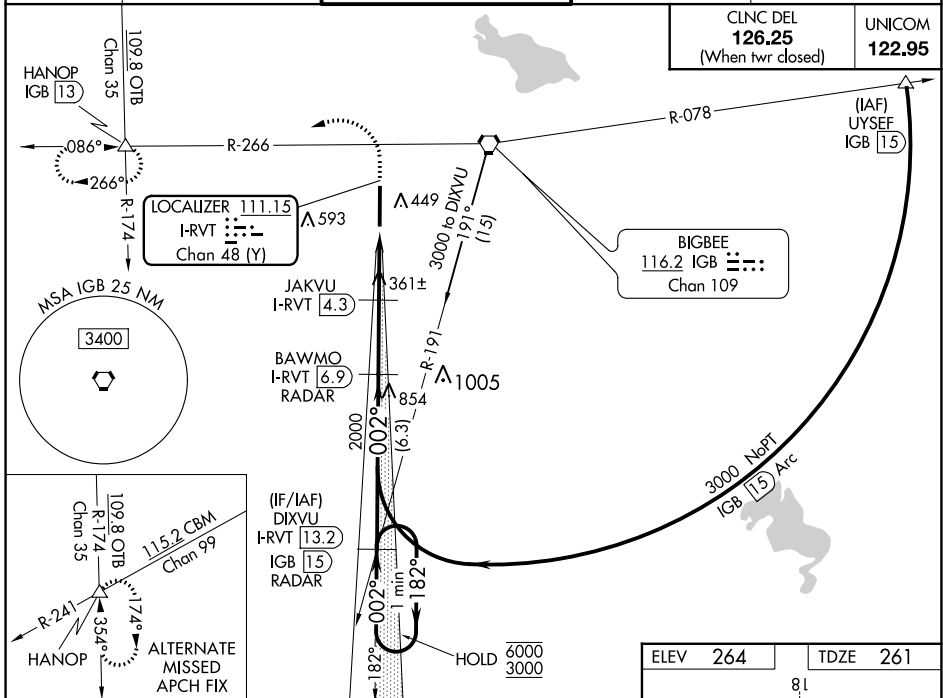
ILS or LOC RWY 36

GOLDEN TRIANGLE RGNL (GTR)

DME or RADAR required.

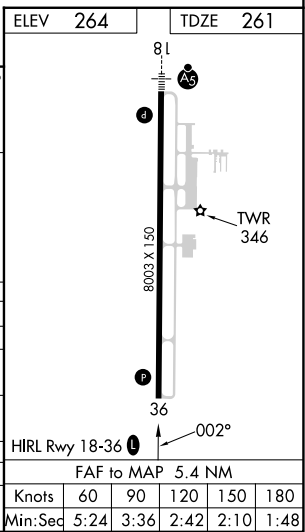
▲ MISSED APPROACH: Climb to 900 then climbing left turn to 2400 on IGB VORTAC R-266 to HANOP INT/IGB VORTAC 13 DME and hold.

ATIS 126.375	COLUMBUS APP CON* 135.6 323.275	GOLDEN TRIANGLE TOWER* 118.2 (CTAF) 0 298.875	GND CON 135.375 322.475	CLNC DEL 135.375 322.475
------------------------	---	---	-----------------------------------	------------------------------------



One Minute Holding Pattern	VGSI and ILS glidepath not coincident (VGSI Angle 3.00/TCH 55).	900	2400	HANOP
I-RVT 13.2	BAWMO I-RVT 6.9 RADAR	IGB R-266		▲
IGB 15 RADAR	JAKVU I-RVT 4.3			
	I-RVT 2.6			
	I-RVT 1.6			
	6.3 NM	2.7 NM	1.7 NM	1 NM
CATEGORY	A	C	D	E
S-ILS 36		461-3/4	200 (200-3/4)	
S-LOC 36	1140-1 1/4	879 (900-1 1/4)	1140-2 1/2	879 (900-2 1/2)
C CIRCLING	1140-1 1/4	876 (900-1 1/4)	1140-2 1/2 876 (900-2 1/2)	1140-3 876 (900-3)
JAKVU FIX MINIMUMS				
S-LOC 36		620-1	359 (400-1)	
C CIRCLING	760-1	496 (500-1)	960-2 696 (700-2)	960-2 1/4 696 (700-2 1/4)
			960-2 1/2 696 (700-2 1/2)	

CLNC DEL 126.25 (When twr closed)	UNICOM 122.95
--	-------------------------



SC-4, 07 SEP 2023 to 05 OCT 2023

SC-4, 07 SEP 2023 to 05 OCT 2023

FAC to MAP 5.4 NM	Knots	60	90	120	150	180
	Min:Sec	5:24	3:36	2:42	2:10	1:48