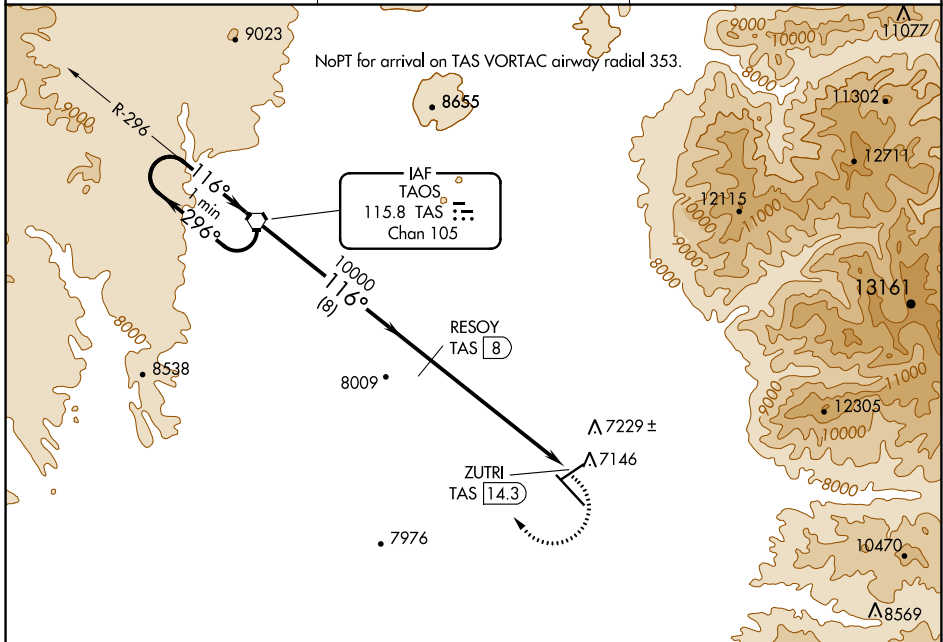


VORTAC TAS <b>115.8</b> Chan <b>105</b>	APP CRS <b>116°</b>	Rwy Idg TDZE Apt Elev	<b>N/A</b> <b>N/A</b> <b>7095</b>
---	------------------------	-----------------------------	---

**VOR/DME-B**  
TAOS RGNL (SKX)

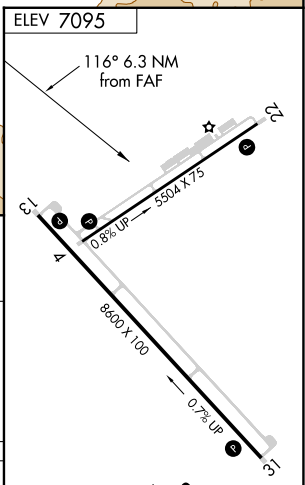
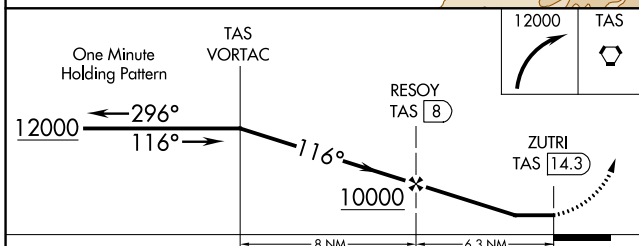
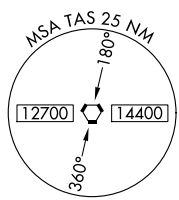
**MISSED APPROACH:** Climbing right turn to 12000 direct TAS VORTAC and hold.

AWOS-3PT <b>132.975</b>	ALBUQUERQUE CENTER <b>132.8 346.35</b>	UNICOM <b>122.8 (CTAF) 0</b>
----------------------------	---	---------------------------------



SW-1, 07 SEP 2023 to 05 OCT 2023

SW-1, 07 SEP 2023 to 05 OCT 2023



CATEGORY	A	B	C	D
<b>CIRCLING</b>	8000-1¼	905 (1000-1¼)	8000-2¾ 905 (1000-2¾)	8020-3 925 (1000-3)

REIL Rwys 4, 13 and 31  
MIRL Rwys 4-22 and 13-31