

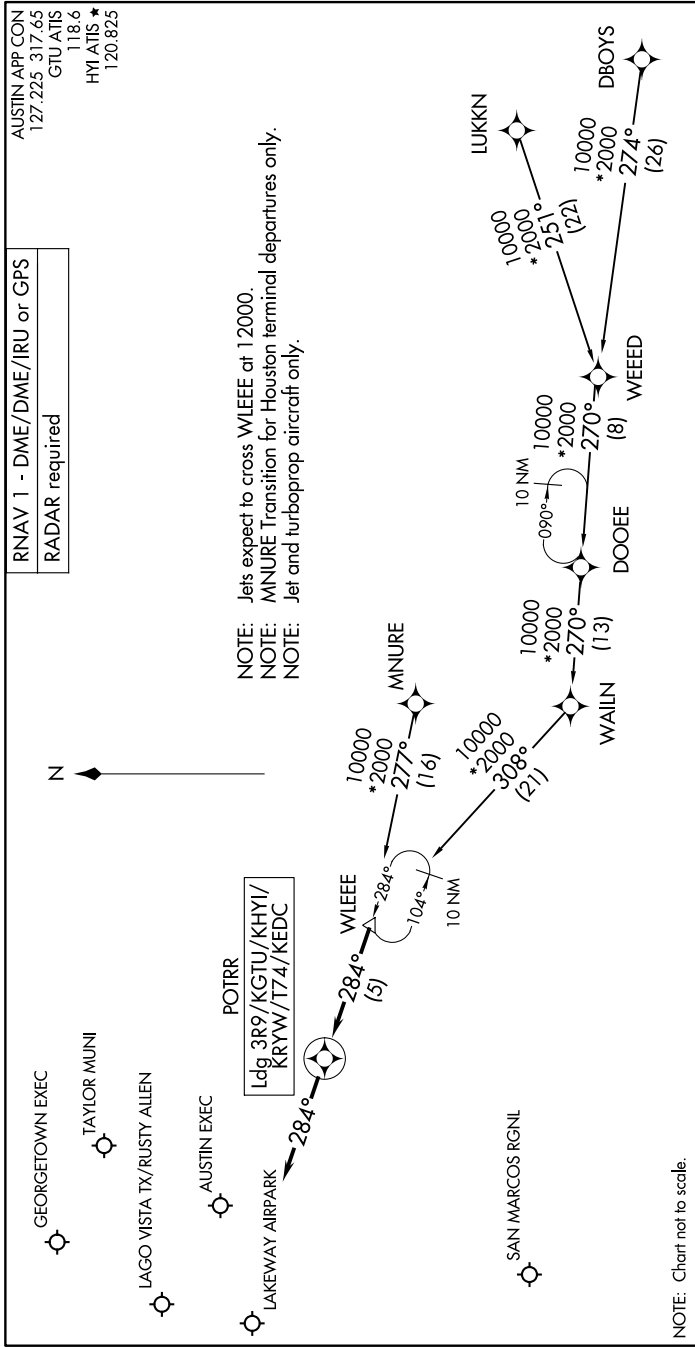
POTRR TWO ARRIVAL (RNAV)

AUSTIN, TEXAS

SC-3, 07 SEP 2023 to 05 OCT 2023

RNAV 1 - DME/DME/IRU or GPS
 RADAR required

AUSTIN APP CON
 127.225 317.45
 GTU ATIS
 118.6
 HY ATIS *
 120.825



NOTE: Jets expect to cross WLEEE at 12000.
 NOTE: MNNURE Transition for Houston terminal departures only.
 NOTE: Jet and turboprop aircraft only.

ARRIVAL ROUTE DESCRIPTION

- DBOYS TRANSITION (DBOYS.POTRR2)
- LUKKN TRANSITION (LUKKN.POTRR2)
- MNNURE TRANSITION (MNNURE.POTRR2)
- WEEED TRANSITION (WEEED.POTRR2)

LANDING ALL AIRPORTS: From WLEEE on track 284° to POTRR, then on track 284°. Expect RADAR vectors to final approach course.

NOTE: Chart not to scale.

SC-3, 07 SEP 2023 to 05 OCT 2023

POTRR TWO ARRIVAL (RNAV)

AUSTIN, TEXAS