

WAAS CH 90309 W19A	APP CRS 189°	Rwy Idg TDZE Apt Elev	4500 568 588
--	------------------------	-----------------------------	---

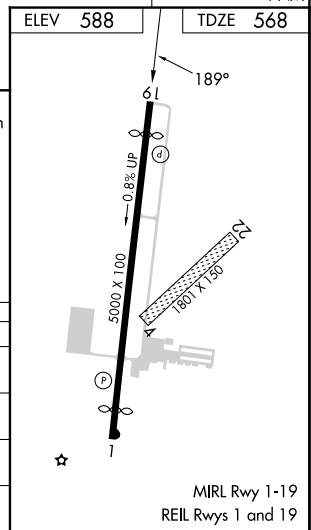
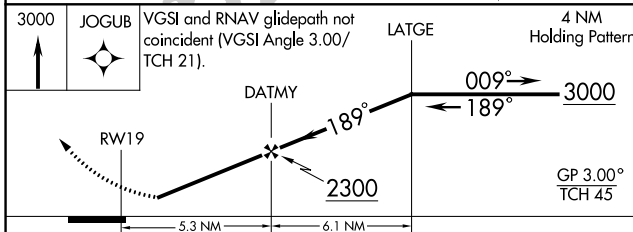
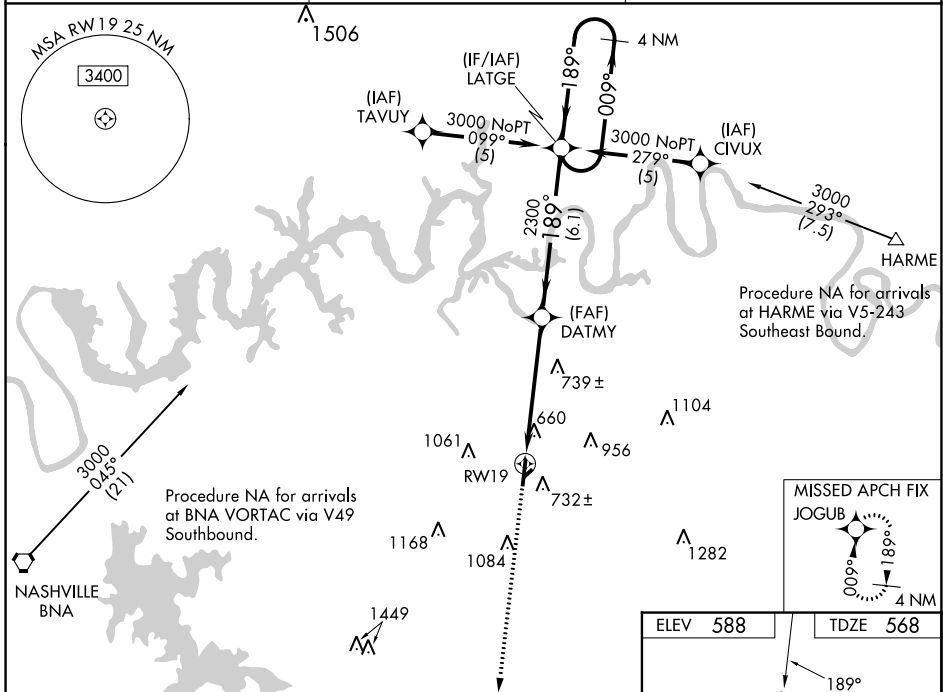
RNAV (GPS) RWY 19

LEBANON MUNI (M54)

Baro-VNAV NA when using Nashville Intl altimeter setting. For uncompensated Baro-VNAV systems, LNAV/VNAV NA below -16° C (4° F) or above 47° C (116° F). DME/DME RNP-0.3 NA. Visibility reduction by helicopters NA. When local altimeter setting not received, use Nashville Intl altimeter setting: increase LPV DA to 942; increase all MDA 60 feet and Circling Cat C visibility ¼ SM.

MISSED APPROACH:
Climb to 3000 direct JOGUB and hold.

AWOS-3 118.325	NASHVILLE APP CON 118.4 360.7	UNICOM 122.725 (CTAF)
--------------------------	---	---------------------------------



CATEGORY	A	B	C	D
LPV DA	899-1¼		331 (400-1¼)	
LNAV/VNAV DA	996-1½		428 (500-1½)	
LNAV MDA	1000-1	432 (500-1)	1000-1¼ 432 (500-1¼)	1000-1½ 432 (500-1½)
CIRCLING	1100-1 512 (600-1)	1200-1 612 (700-1)	1440-2½ 852 (900-2½)	1520-3 932 (1000-3)

SE-1, 07 SEP 2023 to 05 OCT 2023

SE-1, 07 SEP 2023 to 05 OCT 2023