

WAAS CH <b>70724</b> <b>W23A</b>	APP CRS <b>230°</b>	Rwy Idg TDZE Apt Elev	<b>6011</b> <b>464</b> <b>468</b>
--	------------------------	-----------------------------	---

# RNAV (GPS) RWY 23

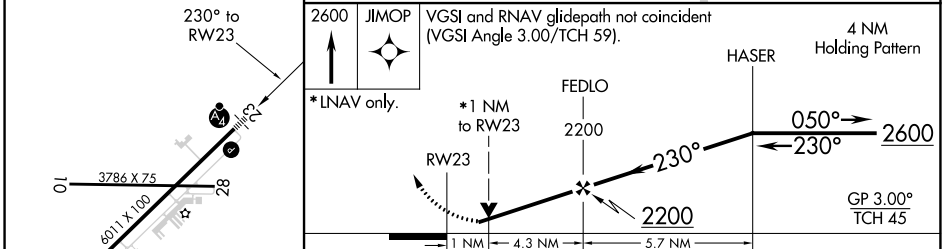
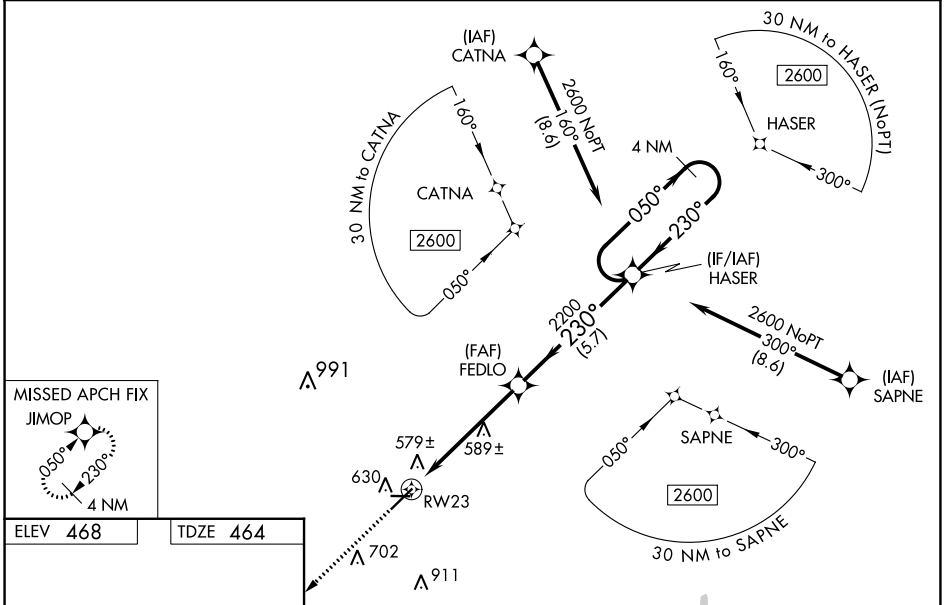
JIMMY CARTER RGNL (ACJ)

**RNP APCH.**

Baro-VNAV NA and VDP NA when using Columbus altimeter setting. For uncompensated Baro-VNAV systems, LNAV/VNAV NA below -15°C or above 41°C. For inop ALS when using Columbus altimeter setting, increase LPV and LNAV/VNAV all Cats visibility to 1 3/8 SM, LNAV Cats C and D visibility to 1 3/8 SM, and Circling Cat D visibility to 2 1/4 SM. Rwy 23 helicopter visibility reduction below 3/4 SM NA. When local altimeter setting not received, use Columbus altimeter setting and increase LPV DA to 874, LNAV/VNAV DA to 879 feet and all visibilities 3/8 SM, increase all MDAs 120 feet and LNAV Cats C/D visibility 3/8 SM and Circling Cat C visibility 1/2 SM, Cat D 1/4 SM. For inop ALS, increase LPV all Cats, LNAV/VNAV Cat D, and LNAV Cat D visibility to 1 SM. Circling Rwy 10, 28 NA at night.

**MALSF** MISSED APPROACH: Climb to 2600 direct JIMOP and hold.

AWOS-3 <b>128.375</b>	ATLANTA APP CON * <b>124.2 323.1</b>	CLNC DEL <b>119.95</b>	UNICOM <b>122.8 (CTAF) 0</b>
--------------------------	---	---------------------------	---------------------------------



CATEGORY	A	B	C	D
LPV DA		760-3/4	296 (300-3/4)	
LNAV/VNAV DA		765-3/4	301 (300-3/4)	
LNAV MDA	840-3/4	376 (400-3/4)	840-3/4	376 (400-3/4)
CIRCLING	940-1	472 (500-1)	1020-1 1/2 552 (600-1 1/2)	1280-2 3/4 812 (900-2 3/4)

SE-4, 07 SEP 2023 to 05 OCT 2023

SE-4, 07 SEP 2023 to 05 OCT 2023