

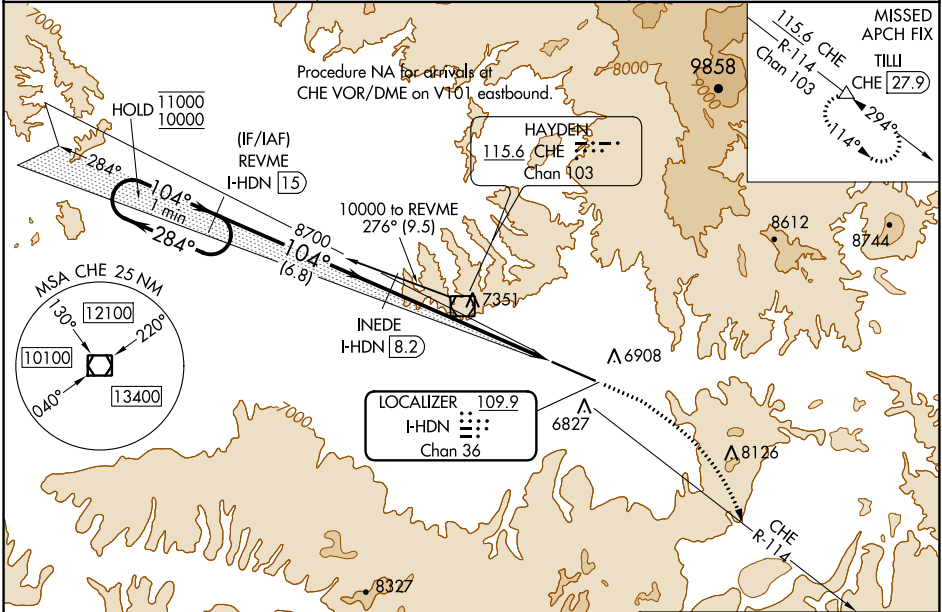
LOC/DME F-HDN <b>109.9</b> Chan <b>36</b>	APP CRS <b>104°</b>	Rwy Idg TDZE Apt Elev	<b>9490</b> <b>6591</b> <b>6606</b>
---	------------------------	-----------------------------	---

# ILS or LOC RWY 10

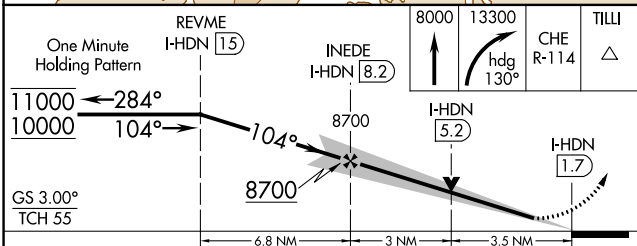
YAMPA VALLEY (HDN)

DME required.	MALSF	MISSED APPROACH: Climb to 8000 then climbing right turn to 13300 on heading 130° and on CHE VOR/DME R-114 to TILLI/CHE 27.9 DME and hold, continue climb-in-hold to 13300. * Missed approach requires minimum climb of 307 feet per NM to 8700.
---------------	-------	--

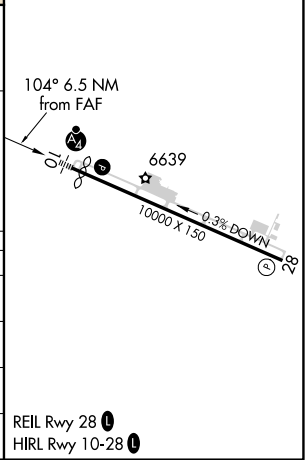
AWOS-3PT <b>119.275</b>	DENVER CENTER <b>120.475 235.975</b>	UNICOM <b>123.0</b> (CTAF)
----------------------------	---	-------------------------------



ELEV 6606	TDZE 6591
-----------	-----------



CATEGORY	A	B	C	D
S-ILS 10*	6791-¾ 200 (200-¾)			
S-ILS 10	7414-2 823 (900-2)			
S-LOC 10	7760-1 1169 (1200-1)	7760-1½ 1169 (1200-1½)	7760-3 1169 (1200-3)	
CIRCLING	7760-1½ 1154 (1200-1½)	7760-1½ 1154 (1200-1½)	7760-3 1154 (1200-3)	8180-3 1574 (1600-3)



SW-1, 07 SEP 2023 to 05 OCT 2023

SW-1, 07 SEP 2023 to 05 OCT 2023