

| | | |
|--|------------------------|--|
| WAAS CH 48825 W28A | APP CRS 303° | Rwy Idg 10000 TDZE 6606 Apt Elev 6606 |
|--|------------------------|--|

RNAV (GPS) RWY 28

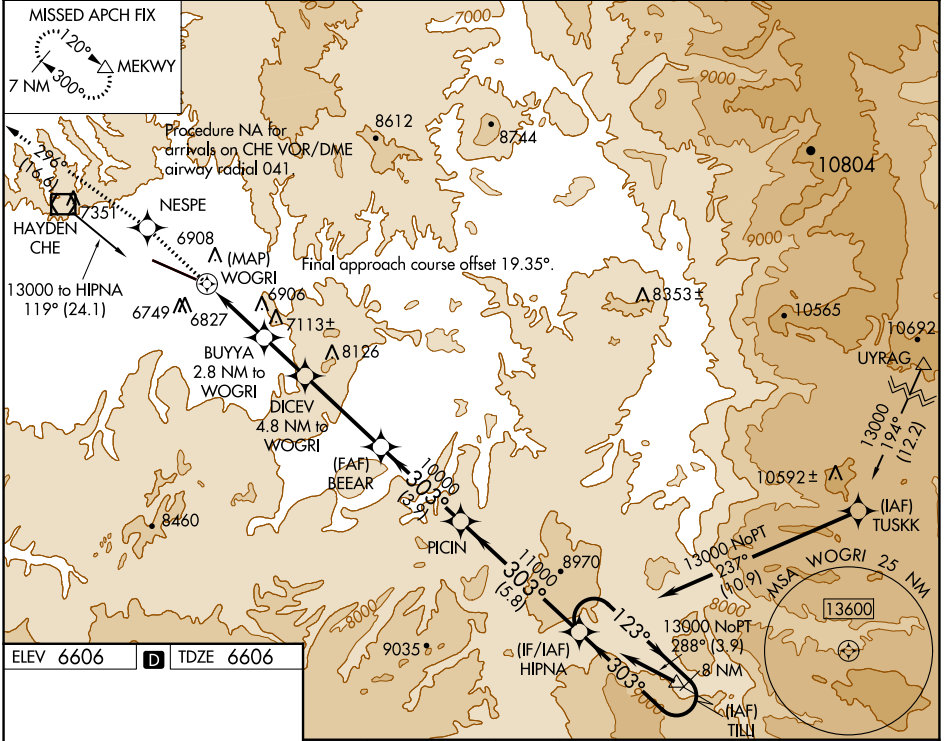
YAMPA VALLEY (HDN)

RNP APCH.

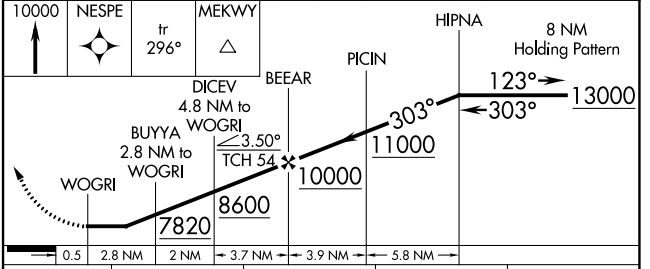
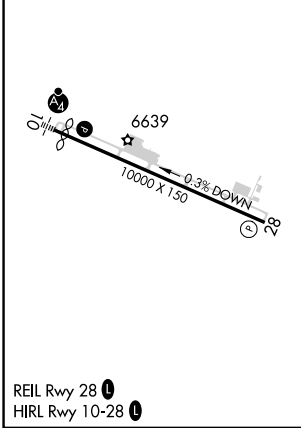
⚠ When local altimeter not received use Craig-Moffat altimeter setting and increase all MDA 100 feet, increase LP and LNAV Cat C/D visibility ¼ mile. Rwy 28 helicopter visibility reduction below ¾ SM NA.

MISSED APPROACH: Climb to 10000 direct NESPE and on track 296° to MEKWY and hold.

| | | |
|----------------------------|---|---------------------------------|
| AWOS-3PT 119.275 | DENVER CENTER 120.475 235.975 | UNICOM 123.0 (CTAF) 0 |
|----------------------------|---|---------------------------------|



| | | |
|-----------|---|-----------|
| ELEV 6606 | D | TDZE 6606 |
|-----------|---|-----------|



| CATEGORY | | A | B | C | D |
|----------|-----|--------|-------------|---------------|---------------|
| LP | MDA | 7000-1 | 394 (400-1) | 7000-1½ | 394 (400-1½) |
| LNAV | MDA | 7080-1 | 474 (500-1) | 7080-1½ | 474 (500-1½) |
| CIRCLING | | 7220-1 | 614 (700-1) | 7660-3 | 8180-3 |
| | | | | 1054 (1100-3) | 1574 (1600-3) |

SW-1, 07 SEP 2023 to 05 OCT 2023

SW-1, 07 SEP 2023 to 05 OCT 2023