

WAAS CH <b>53410</b> <b>W10A</b>	APP CRS <b>104°</b>	Rwy Idg TDZE Apt Elev	<b>9490</b> <b>6591</b> <b>6606</b>
--	------------------------	-----------------------------	---

# RNAV (GPS) Y RWY 10

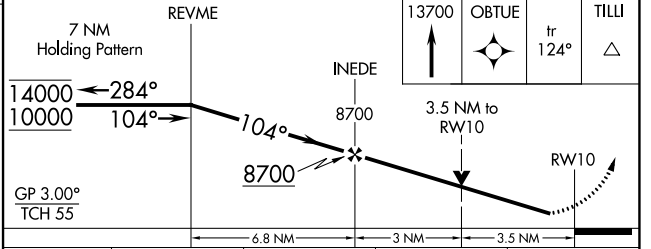
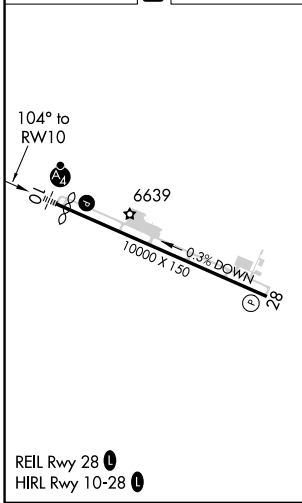
YAMPA VALLEY (HDN)

RNP APCH-GPS.	MALSF 	MISSED APPROACH: Climb to 13700 direct OBTUE and on track 124° to TILLI and hold, continue climb-in-hold to 13700. * Missed approach requires minimum climb of 295 feet per NM to 8700.
▼ Rwy 10 helicopter visibility reduction below 3/4 SM NA. ▲ Inop table does not apply to *LPV all Cats, LNAV/VNAV all Cats, and LNAV Cats C/D. For uncompensated Baro-VNAV systems, LNAV/VNAV NA below -28°C or above 54°C.		

AWOS-3 <b>119.275</b>	DENVER CENTER <b>120.475 235.975</b>	UNICOM <b>123.0 (CTAF)</b>
--------------------------	---	-------------------------------



ELEV 6606 **D** TDZE 6591



CATEGORY	A	B	C	D
LPV DA*	6791-3/4 200 (200-3/4)			
LPV DA	7327-13/4 736 (800-13/4)			
LNAV/VNAV DA	7966-5 1375 (1400-5)			
LNAV MDA	7760-1 1169 (1200-1)	7760-1 1/4 1169 (1200-1 1/4)	7760-3	1169 (1200-3)
<b>C</b> CIRCLING	7760-1 1/4 1154 (1200-1 1/4)	7760-1 1/2 1154 (1200-1 1/2)	7760-3 1154 (1200-3)	8180-3 1574 (1600-3)

SW-1, 07 SEP 2023 to 05 OCT 2023

SW-1, 07 SEP 2023 to 05 OCT 2023