

WAAS CH <b>82205</b> <b>W25A</b>	APP CRS <b>246°</b>	Rwy Idg TDZE Apt Elev	<b>5002</b> <b>2240</b> <b>2275</b>
--	------------------------	-----------------------------	---

# RNAV (GPS) RWY 25

SOMERSET COUNTY (2G9)

**⚠ NA** Baro-VNAV NA when using Johnstown altimeter setting. For uncompensated Baro-VNAV systems, LNAV/VNAV NA below -19°C (-2°F) or above 53°C (128°F). DME/DME RNP-0.3 NA. Procedure NA at night. Helicopter visibility reduction below 1 SM NA. Circling NA to Rwy 14-32. When local altimeter setting not received, use Johnstown altimeter setting and increase all DA 44 feet and all MDA 60 feet. Increase LPV all Cats and LNAV/VNAV all Cats visibility 1/8 mile and increase LNAV Cat C/D visibility 1/4 mile.

**MISSED APPROACH:**  
Climb to 5600 direct  
KAVGY and hold.

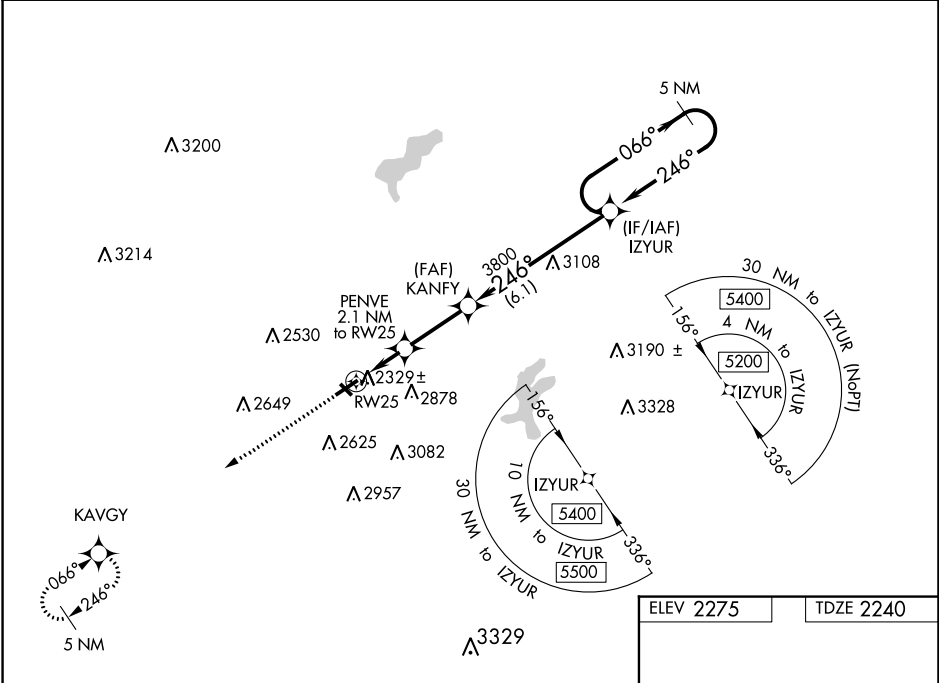
AWOS-3P  
**133.8**

JOHNSTOWN APP CON ★  
**121.2 299.2**

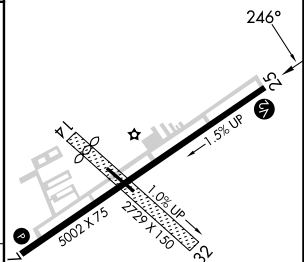
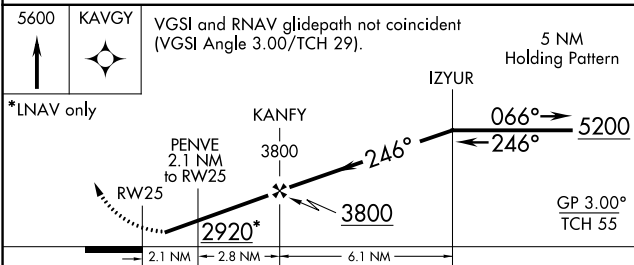
UNICOM  
**122.8 (CTAF) 0**

NE-4, 07 SEP 2023 to 05 OCT 2023

NE-4, 07 SEP 2023 to 05 OCT 2023



ELEV 2275	TDZE 2240
-----------	-----------



CATEGORY	A	B	C	D
LPV DA		2490-1	250 (300-1)	
LNAV/VNAV DA		2583-1¼	343 (400-1¼)	
LNAV MDA		2580-1	340 (400-1)	
<b>C</b> CIRCLING	2820-1 545 (600-1)	2920-1 645 (700-1)	3460-3 1185 (1200-3)	3520-3 1245 (1300-3)

MIRL Rwy 7-25  
REIL Rws 7 and 25 0